



4/126-130 Spencer Road Cremorne, NSW

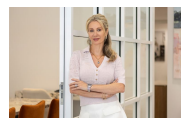


North facing sanctuary

Private Inspections are available, and flexible throughout the week.

Price:

Expressions of Interest



Marize Bellomo

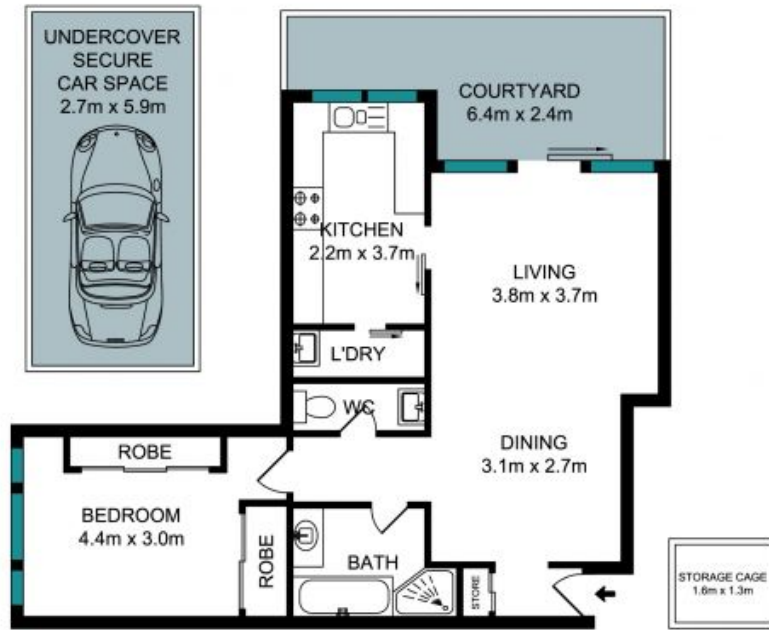
0414 972 203



Bruce N. Huang

0468 694 060

à, fé²·æ-é»,,



The Floor plan is not to scale, measurements are indicative and in meters. Exterior elements are not in position. Plan should not be relied on. Interested parties should make and rely on their own enquiries. All other information provided has been collected from reliable sources but cannot be guaranteed for accuracy.

4/126-130 Spencer Road, Cremorne

