



23 Parklands Ave Heathcote, NSW

5 2 2

Beautiful family home promising relaxed lifestyle

This immaculate five bedroom home reveals an expansive layout perfectly suited to the needs of a growing family. It easily caters to everyday living, while also providing multiple indoor and outdoor spaces that are ideal for relaxing or entertaining. Enjoying a quiet cul-de-sac address, this home offers easy access to schools and public transport with the Royal National Park on your doorstep.

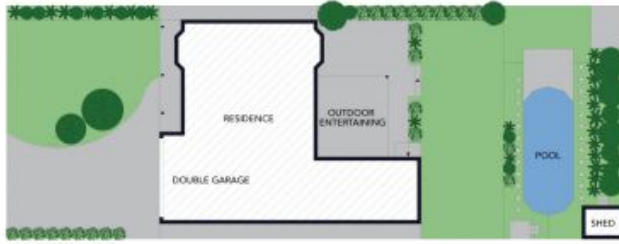
Price: \$1,710,000
Council Rates: \$476.60 p/q
Water Rates: \$297.64 p/q



Rhys Christofa
0415 684 877



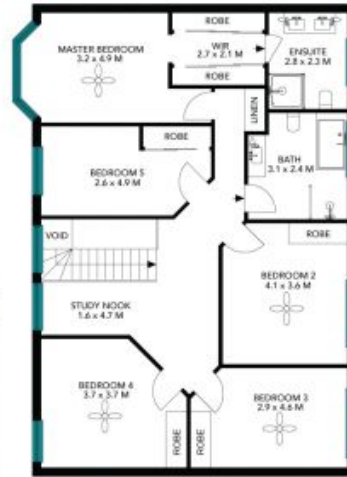
Ezra Malolo
0401 490 024



Site Plan



Ground Floor



First Floor



The site plan and floor plan are not to scale; measurements are indicative and in metres. Bushes and trees are placed for illustration purposes. Plans should not be relied on. Interested parties should make and rely on their own enquiries. All other information provided has been collected from reliable sources but cannot be guaranteed for accuracy.

23 Parklands Ave
Heathcote



Ground Floor



First Floor



The floor plan is not to scale; measurements are indicative and in metres. All features included in this 3D plan are for inspiration purposes only. This is not an exact replica of the property or the position of exterior elements. Plans should not be relied on. Interested parties should make and rely on their own enquiries.