



1/426 Sydney Road Balgowlah, NSW 2 1

Gorgeous garden apartment in key central location

Art Deco ambience and sumptuous contemporary styling unite on this adorable garden apartment that's perfectly located within footsteps of Balgowlah Village. Showcasing a generous living space, dining room by the kitchen and direct access to a common private courtyard and lawn, it is only 230m from Stockland Village, Coles supermarket, eateries and buses to Manly Beach or the city.

Price: Contact Agent
Council Rates: \$366.40 p/q
Strata Rates: \$644.00 p/q



Jessica Fedrigo

0404 989 070

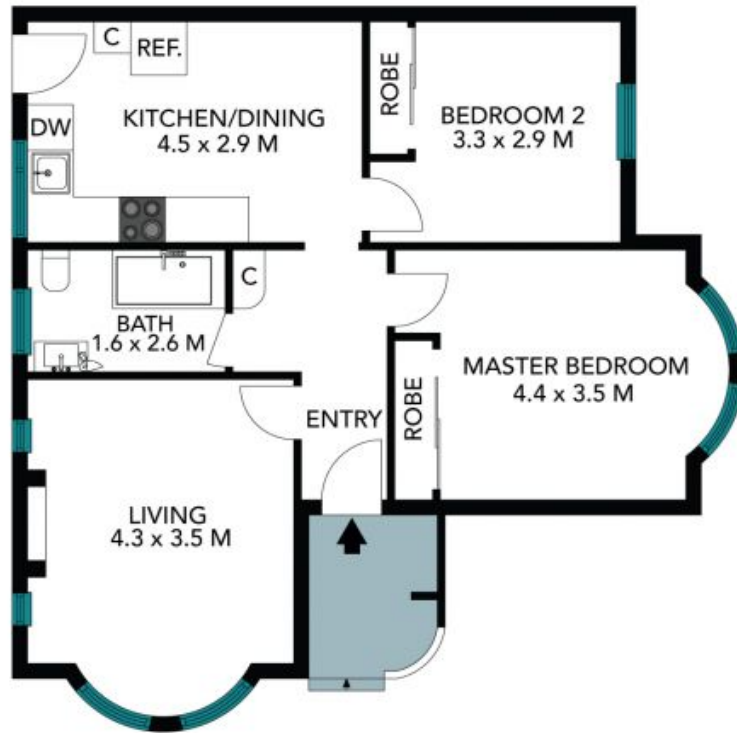


Kathryn 'Charlie'

0447 664 302
Delaney

1/426 Sydney Road
Balgowlah

STONE



The floor plan is not to scale, measurements are indicative and in metres. Exterior elements are not in position. Plans should not be relied on. Interested parties should make and rely on their own enquiries. All other information provided has been collected from reliable sources but cannot be guaranteed for accuracy.

1/426 Sydney Road
Balgowlah

STONE



The floor plan is not to scale, measurements are indicative and in metres. All features included in this 3D plan are for inspiration purposes only. This is not an exact replica of the property or the position of exterior elements. Plans should not be relied on. Interested parties should make and rely on their own enquiries.