

12 Ryan Place Beacon Hill, NSW

4

2

3

Fabulous family entertainer with sweeping views

From an elevated vantage point in a tranquil family-friendly pocket, this wonderfully bright and modern family residence reveals panoramic leafy district views that stretch to St Patrick's at Manly and beyond. Flowing over two levels with multiple living spaces flowing to a choice of alfresco entertaining areas, deep north rear lawn and landscaped gardens, it is only a five minute stroll to the primary school and within an easy walk of B-Line city buses, eateries and Warringah Mall.

Price:

Contact Agent



Jessica Fedrigo

0404 989 070



Adam Moore

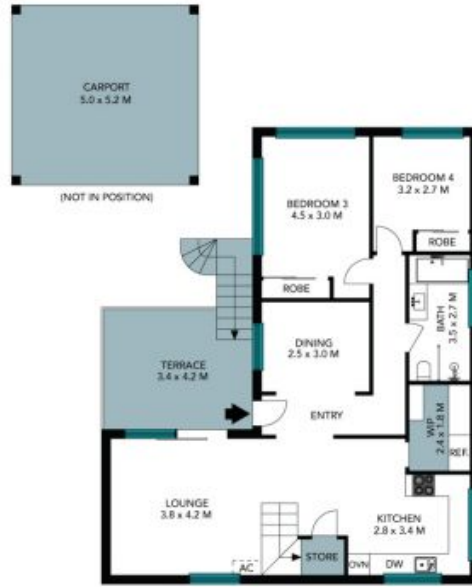
0428 319 096

12 Ryan Place
Beacon Hill



Lower Ground

Upper Level



Entry Level



Site Plan



Internal Area : 160 Sqm
External Area : 50 Sqm
Total Area : 210 Sqm

The site plan and floor plan are not to scale; measurements are indicative and in metres. Bushes and trees are placed for illustration purposes. Plans should not be relied on. Interested parties should make and rely on their own enquiries. All other information provided has been collected from reliable sources but cannot be guaranteed for accuracy.

12 Ryan Place
Beacon Hill



Lower Ground



Upper Level



Entry Level



The floor plan is not to scale; measurements are indicative and in metres. All features included in this 3D plan are for inspiration purposes only. This is not an exact replica of the property or the position of exterior elements. Plans should not be relied on. Interested parties should make and rely on their own enquiries.