



6/215 Rothery Street Bellambi, NSW

2 2 2

**SOLD BY STONE REAL ESTATE | PAUL PIACENTIN & DARNELL HASELAU**

**Price:** \$740,000

Coastal retreat with easy access to all conveniences



**Paul Piacentin**

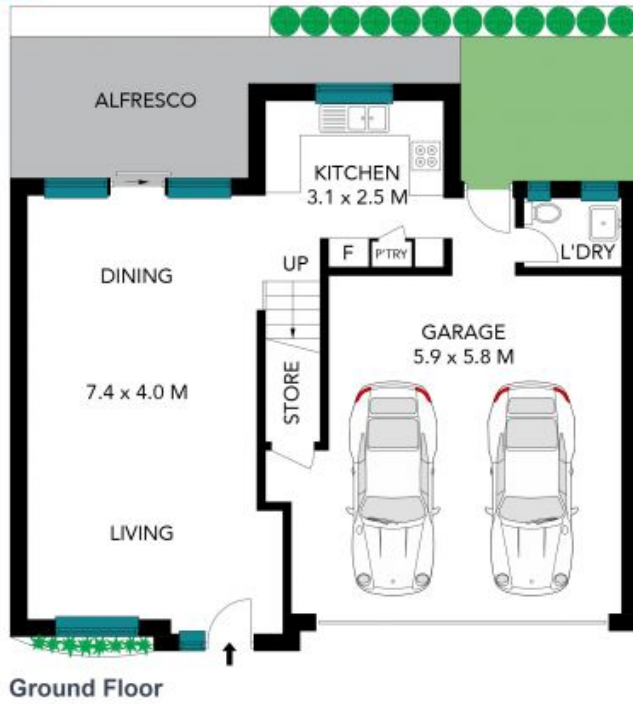
0411 754 884



**Darnell Haselau**

0426 400 240

6/215 Rothery Street  
Bellambi



The site plan and floor plan are not to scale; measurements are indicative and in metres. Bushes and trees are placed for illustration purposes. Plans should not be relied on. Interested parties should make and rely on their own enquiries. All other information provided has been collected from reliable sources but cannot be guaranteed for accuracy.