



91 Hilder Street Elderslie, NSW

4 2 2

Location & lifestyle

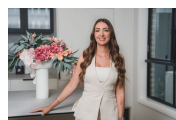
This well-presented family home is situated in a highly sought after part of Elderslie located within walking distance to Elderslie Primary School & Elderslie High School, this home is sure to impress first home buyers, families or investors alike.

Price: \$865,000



Anthony Grima

0421 228 414



Rebecca Philp

0403 613 271

91 Hilder Street  
Elderslie



The floor plan is not to scale; measurements are indicative and in metres. All features included in this 3D plan are for inspiration purposes only. This is not an exact replica of the property or the position of exterior elements. Plans should not be relied on. Interested parties should make and rely on their own enquiries.

