

330 Pacific Highway Lane Cove, NSW

4 

3 

2 

**Sold at auction by Hanny Japri**

**Price:**

Sold at auction

**RENOVATED 4-BED SEMI WITH REAR LANE ACCESS DOUBLE GARAGE**

This beautifully renovated home is located within walking distance of the lively Lane Cove village and fast-growing Crows Nest CBD. Direct public transport access to the City, Chatswood, and Macquarie Park. Move-in ready with a peaceful and quiet ambience, perfectly suited for families, young professionals, or anyone looking for easy care living.

- Open living plan with a stunning view towards the Blue Mountains.
- Multiple living areas with versatility for formal dining, entertainment, or home office.
- Modern eat-in kitchen with access to a balcony with BBQ facilities.
- Double lock up garage plus storage space with rear access via Haldane Lane.
- 4 larger bedrooms, master with ensuite.
- Large attic for extra storage.
- Zoned R4.



**Hanny Japri**

0423 053 180

330 Pacific Highway  
Lane Cove



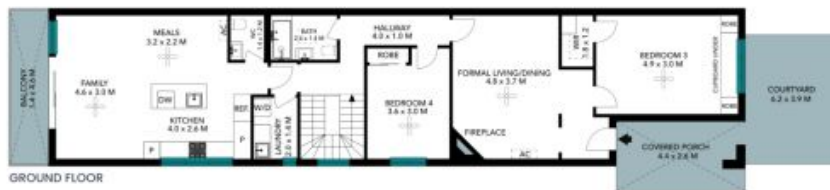
NOT IN POSITION



BASEMENT



LOWER GROUND FLOOR



GROUND FLOOR



The floor plan is not to scale, measurements are indicative and in metres. Exterior elements are not in position. Plans should not be relied on, interested parties should make and rely on their own enquiries. All other information provided has been collected from reliable sources but cannot be guaranteed for accuracy.

330 Pacific Highway  
Lane Cove



BASEMENT



LOWER GROUND FLOOR



GROUND FLOOR



The floor plan is not to scale; measurements are indicative and in metres. All features included in this 3D plan are for inspiration purposes only. This is not an exact replica of the property or the position of exterior elements. Plans should not be relied on. Interested parties should make and rely on their own enquiries.