



6/38-40 Talara Road Gymea, NSW

2 1 1

### Invest In This Highly Sought After Location!

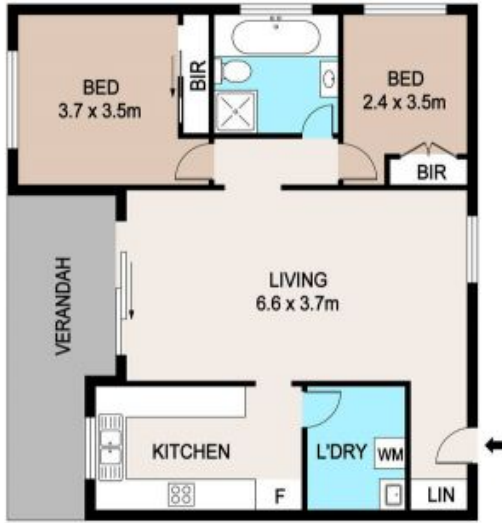
A rare opportunity to secure a highly sought after unit in a solid, small-walk up strata building in a fantastic location. Just a level stroll to the lovely heart of Gymea Village via a side access through the local park. Bus, rail, shops, taxi and supermarket all just minutes away.

Price: SOLD



**Cathy Walton**

0400 220 355



## 6/38-40 TALARA ROAD, GYMEA

**DISCLAIMER**

PLANS SHOWN ARE FOR MARKETING PURPOSES ONLY. ALL DIMENSIONS ARE APPROXIMATE AND NOT TO SCALE. THEY ARE SUBJECT TO ERRORS AND INACCURACIES AND NO LIABILITY WILL BE ACCEPTED. INTERESTED PARTIES SHOULD MAKE THEIR OWN INQUIRIES.

