



15 Stirling Avenue Kirrawee, NSW

3

1

1

### Delightful home embracing tranquil bush setting

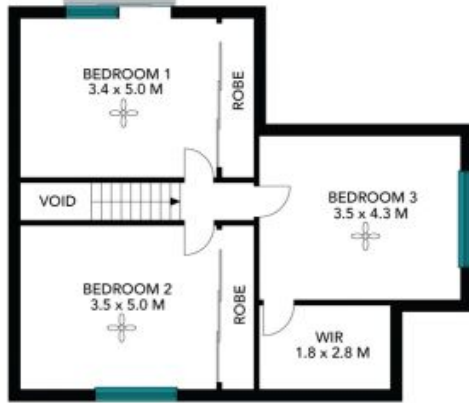
You'll relish the privacy and tranquility of this lovingly presented home, which captures a prized northerly aspect and bushland outlook over Oyster Gully. Its bright interiors showcase vaulted ceilings, with the broad outdoor verandah further enhancing the spacious feel. This property is nestled conveniently close to parks and buses, schools, and a walk to Kareela Village shops.

**Price:** \$1,175,000  
**Council Rates:** \$468.10 p/q  
**Water Rates:** \$199.34 p/q



**Will Soulos**

0403 065 608



1st Floor



Ground Floor



The site plan and floor plan are not to scale; measurements are indicative and in metres. Bushes and trees are placed for illustration purposes. Plans should not be relied on. Interested parties should make and rely on their own enquiries. All other information provided has been collected from reliable sources but cannot be guaranteed for accuracy.

15 Stirling Avenue  
Kirrawee



1st Floor



Ground Floor



The floor plan is not to scale, measurements are indicative and in metres. All features included in this 3D plan are for inspiration purposes only. This is not an exact replica of the property or the position of exterior elements. Plans should not be relied on. Interested parties should make and rely on their own enquiries.