



10/51 Garfield Street Wentworthville, NSW

2 1 1

Solid brick two-bedroom apartment

This cozy two-bedroom apartment resides within a tidy double brick block. The dwelling is low-maintenance and conveniently placed with a desirable northerly aspect. Close to local shops, several parks, bus services, Wentworthville Public School and Wentworthville Station. With easy access to the M4, Great Western Highway, Cumberland Highway and Westmead Hospitals.

Price: \$401,000



Simar Gill

0410 312 242

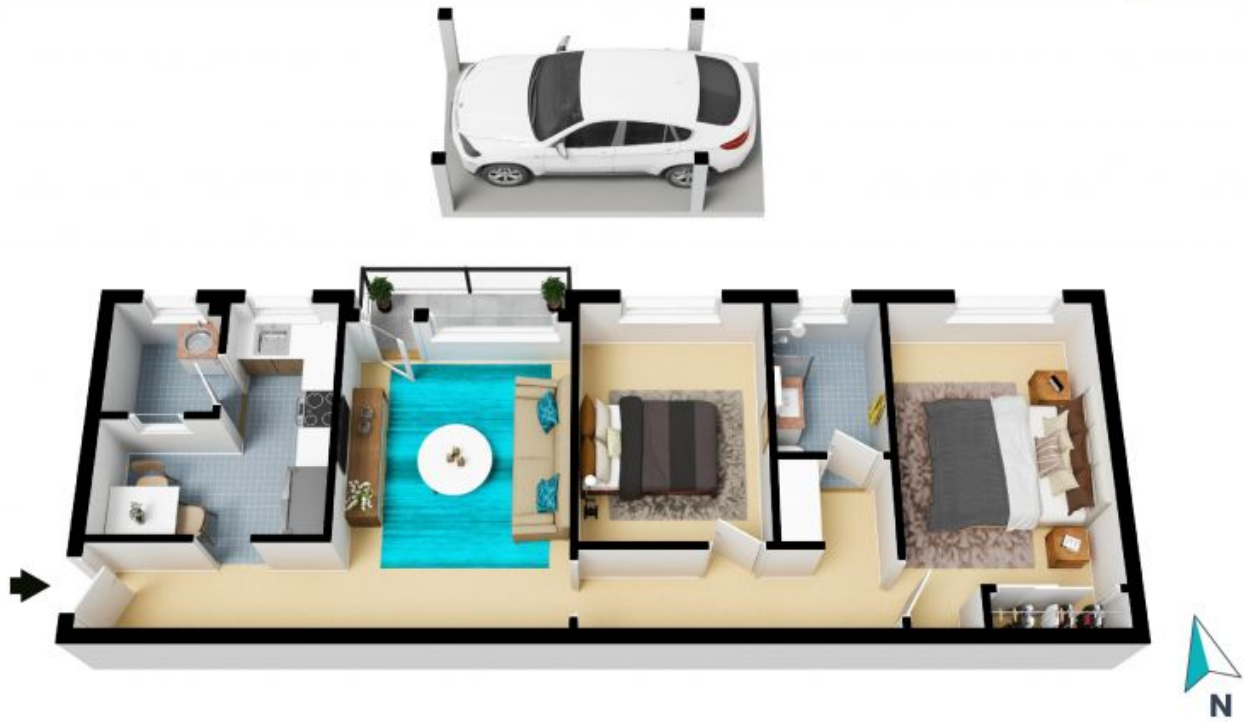


Chris Kypreos

0432 354 445

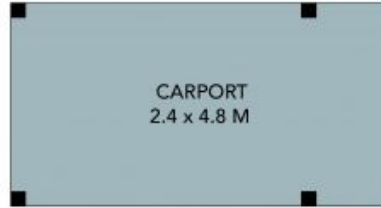
10/51 Garfield St
Wentworthville

STONE

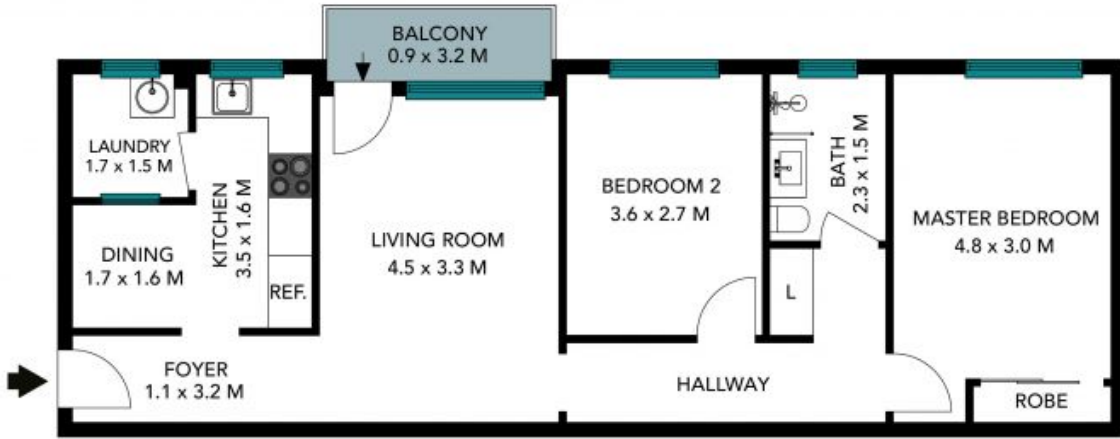


The floor plan is not to scale; measurements are indicative and in metres. All features included in this 3D plan are for inspiration purposes only. This is not an exact replica of the property or the position of exterior elements. Plans should not be relied on. Interested parties should make and rely on their own enquiries.

10/51 Garfield St
Wentworthville



(NOT IN POSITION)



The floor plan is not to scale, measurements are indicative and in metres. Exterior elements are not in position. Plans should not be relied on. Interested parties should make and rely on their own enquiries. All other information provided has been collected from reliable sources but cannot be guaranteed for accuracy.