



29/7 Chapman Avenue Beecroft, NSW



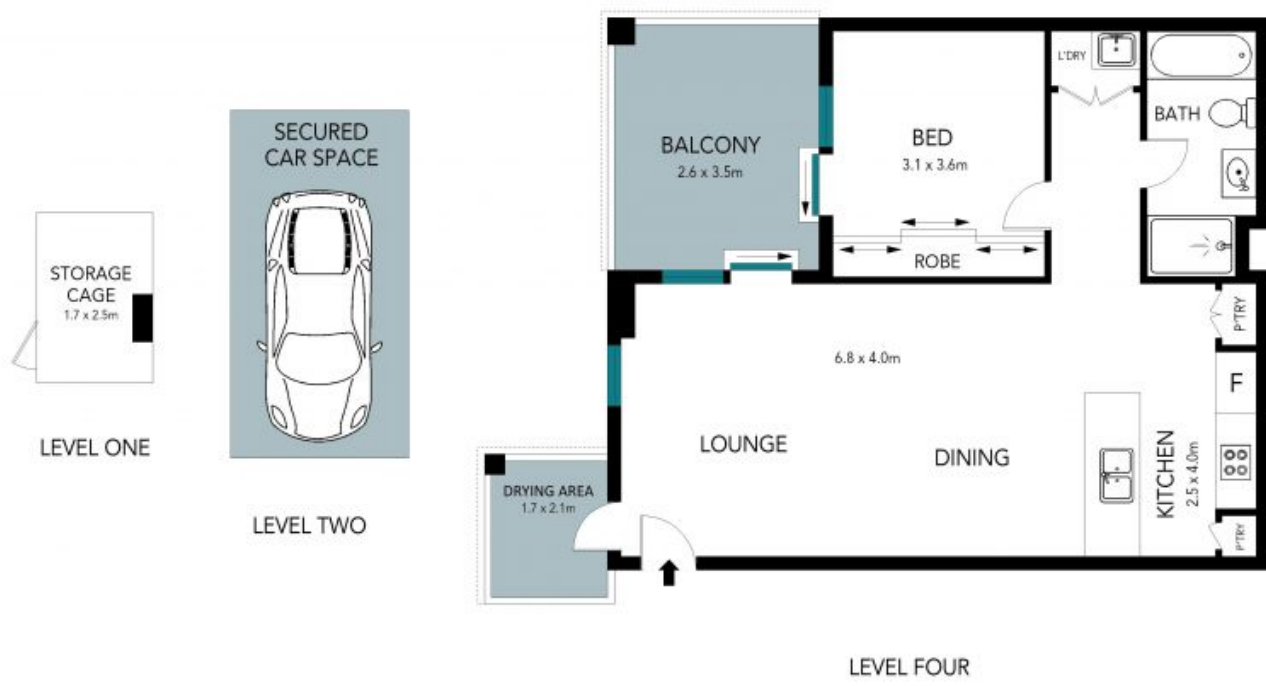
Vibrant and stylish, near-new pad in the heart of Beecroft

A sleek urban retreat enjoying private aspects and prime convenience, this light-filled apartment is fully optimised for effortless contemporary living. Set to the fourth floor of 'The Croft' ? one of Beecroft's most desirable garden complexes.

Price: Open cancelled-Deposit Taken \$500 per
Available Date: ~~00/01/2022~~

Stone Beecroft | Castle

02 8866 1500
Hill | Epping



The floor plan is not to scale; measurements are indicative and in metres. Exterior elements are not in position. Plans should not be relied on. Interested parties should make and rely on their own enquiries.

29/7 Chapman Avenue, Beecroft

