



4/14-20 The Crescent Manly, NSW



Gorgeous town home in a premier lifestyle address

Flowing across two bright and breezy levels with relaxed coastal styling, harbour views and a beautifully landscaped courtyard setting the scene, this sumptuous town home promises a carefree indoor/outdoor lifestyle of luxury and convenience. Focused around a generous living and dining space flowing seamlessly to an entertainers' deck and vast courtyard screened by palms and blossoming gardens, it is peacefully tucked away within footsteps of Delwood Beach and only a few minutes stroll to Manly's beaches, city ferry terminal and cosmopolitan cuisine and social scene.

Price: \$2,850,000



Tim Mumford

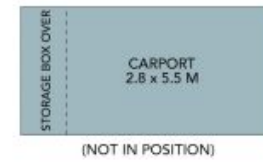
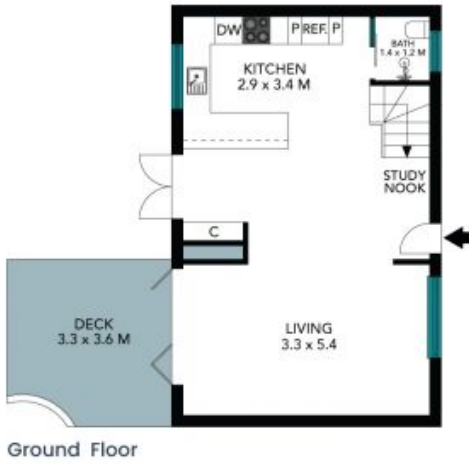
0421 942 693



Kathryn 'Charlie'

0447 664 302

Delaney



The site plan and floor plan are not to scale; measurements are indicative and in metres. Bushes and trees are placed for illustration purposes. Plans should not be relied on. Interested parties should make and rely on their own enquiries. All other information provided has been collected from reliable sources but cannot be guaranteed for accuracy.

4/14-20 The Crescent
Manly



Ground Floor



1st Floor



The floor plan is not to scale; measurements are indicative and in metres. All features included in this 3D plan are for inspiration purposes only. This is not an exact replica of the property or the position of exterior elements. Plans should not be relied on. Interested parties should make and rely on their own enquiries.