



26/56 Christina Stead Street Franklin, ACT

3

2

2

Sold at Auction for \$800,000

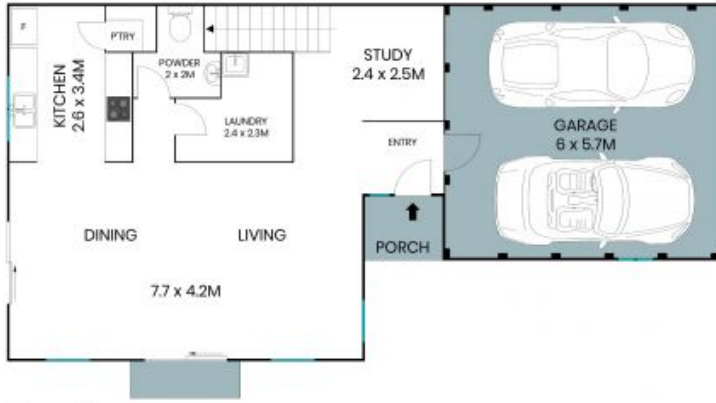
Set in the ever-growing suburb of Franklin, you will be hard-pressed to find a well-sized home like this so close to schools, shops & public transport. It's perfect for the savvy investor or ideal as a family home. Boasting large open plan living & dining areas provide a beautiful space filled with natural lighting for you to relax and unwind. Alternatively, step outside to your large courtyard, offering ample room to wine, dine & entertain your guests in style.

Price: \$800,000



Jess Smith

0410 125 475



Ground Floor



Upper Floor



The site plan and floor plan are not to scale; measurements are indicative and in metres. Bushes and trees are placed for illustration purposes. Plans should not be relied on. Interested parties should make and rely on their own enquiries. All other information provided has been collected from reliable sources but cannot be guaranteed for accuracy.

26/56 Christina Stead Street

Franklin



Ground Floor



Lower Ground Floor



The floor plan is not to scale; measurements are indicative and in metres. All features included in this 3D plan are for inspiration purposes only. This is not an exact replica of the property or the position of exterior elements. Plans should not be relied on. Interested parties should make and rely on their own enquiries.