

26 Dumfries Avenue Mount Ousley, NSW

3 

2 

3 

**SOLD BY STONE REAL ESTATE | SARAH WARD & JAMIE PEREIRA**

**Price:** \$1,200,000

Classic sanctuary just a short drive from Wollongong CBD



**Sarah Ward**

0400 439 602



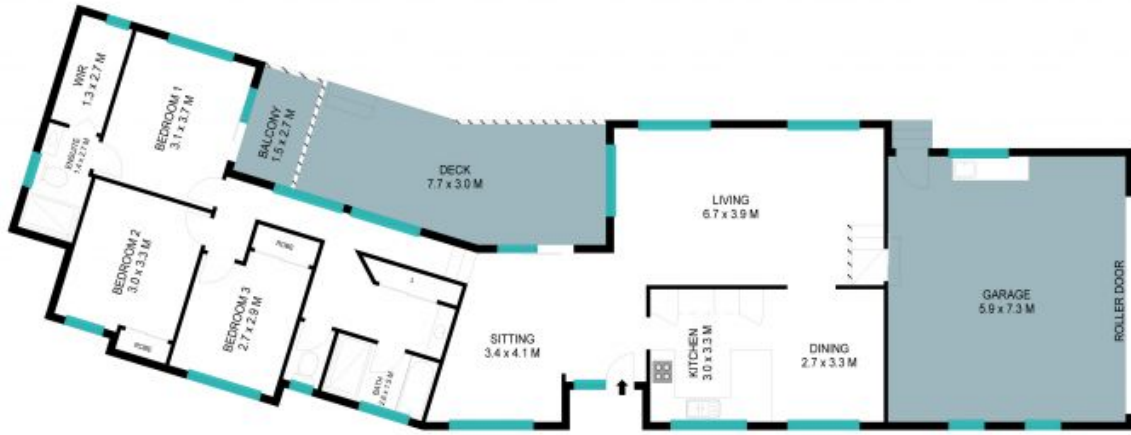
**Jamie Pereira**

0447 379 080

# 26 Dumfries Avenue Mount Ousley



INT : 125m<sup>2</sup>  
EXT : 27m<sup>2</sup>  
GARAGE : 43m<sup>2</sup>



The site plan and floor plan are not to scale; measurements are indicative and in metres. Details and trees are placed for illustration purposes. Plans should not be relied on. Interested parties should make and rely on their own enquiries. All other information provided has been collected from reliable sources but cannot be guaranteed for accuracy.