

13 Cornell Close REGENTS PARK, QLD

4

2

2

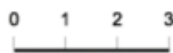
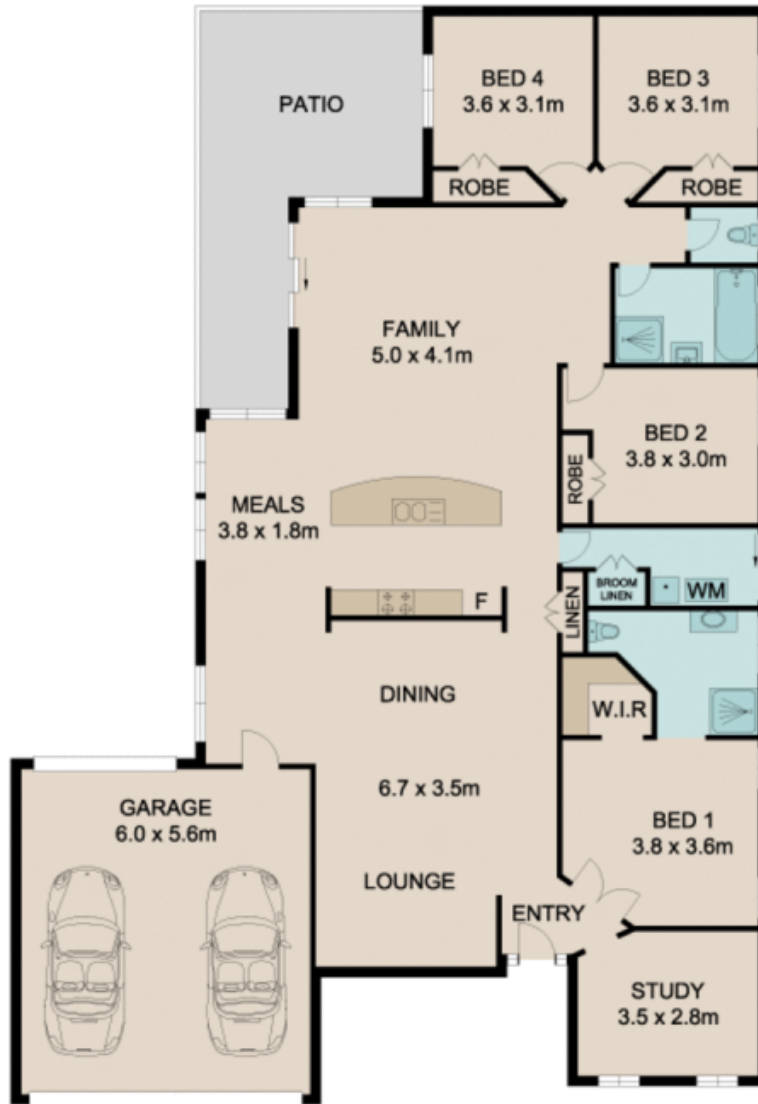
### PRESTIGIOUS CUL DE SAC POSITION

Price:

Low-Mid \$500'S

Prepare to fall in love with this impressive immaculately presented home positioned in a quiet location with lovely street appeal.

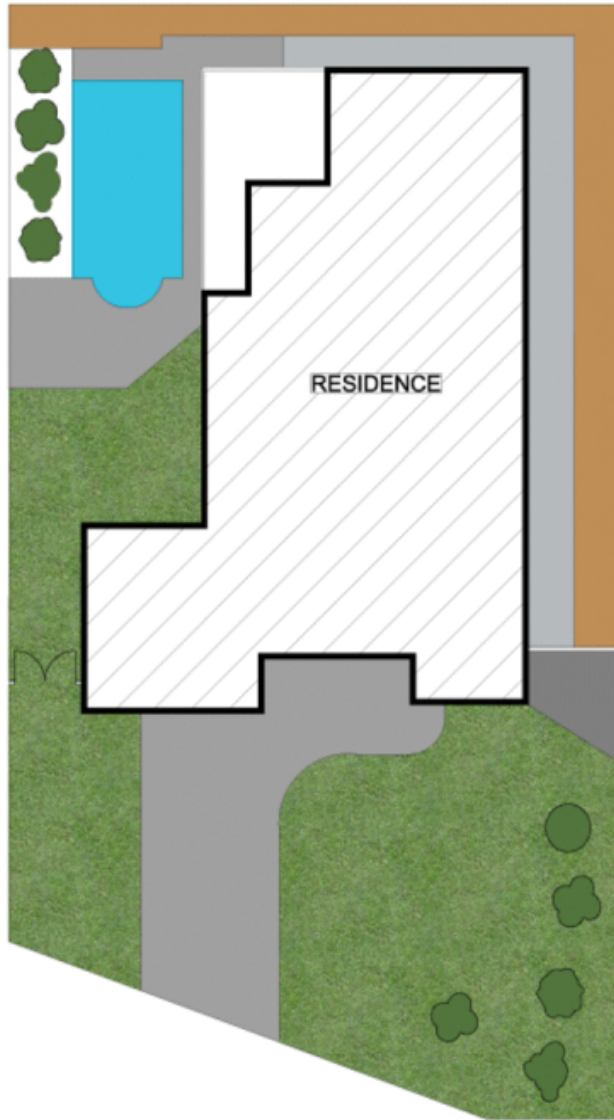
Stone Real Estate -  
Head Office



Scale in metres, indicative only. Dimensions are approximate. All information contained herein is gathered from sources we believe to be reliable. However, we cannot guarantee its accuracy and interested persons should rely on their own enquiries.

INT : 171.88 sq'  
 EXT : 22.45 sq'  
 GARAGE : 33.80 sq'

**13 Cornell Close, Regents Park**



0 1 2 3

Scale in metres, indicative only. Dimensions are approximate. All information contained herein is gathered from sources we believe to be reliable. However, we cannot guarantee its accuracy and interested persons should rely on their own enquiries.

SITE : 171.86m<sup>2</sup>  
SITE : 22.44m<sup>2</sup>  
GARAGE : 35.95m<sup>2</sup>



**13 Cornell Close, Regents Park**