

43 Limerick Drive CRESTMEAD, QLD

3 

1 

2 

SOLAR, SOLID, SPACIOUS

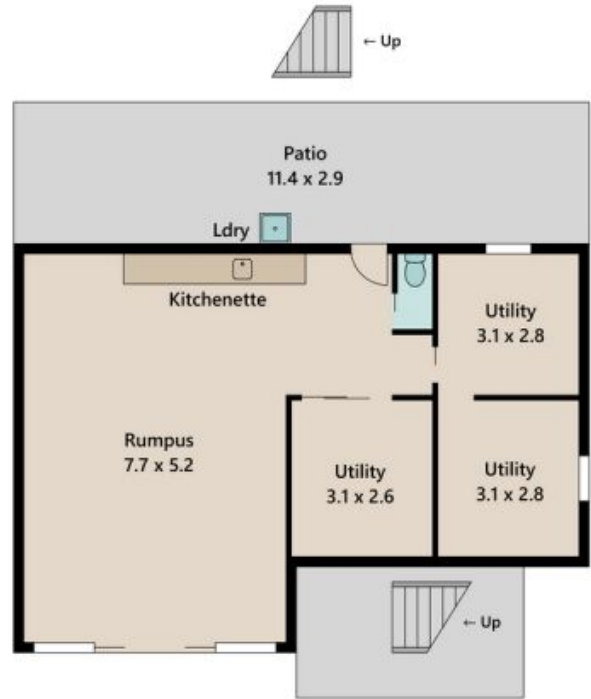
Well maintained on a 603m2 level block and occupying a position of outstanding convenience is this charming home. Boasting 3 bedrooms, open lounge, functional kitchen and dining area with access to a back deck. The spacious backyard has a pergola and seating areas, perfect for those weekends when friends and family drop by.

Price: \$369,000



Lee & Roslyn

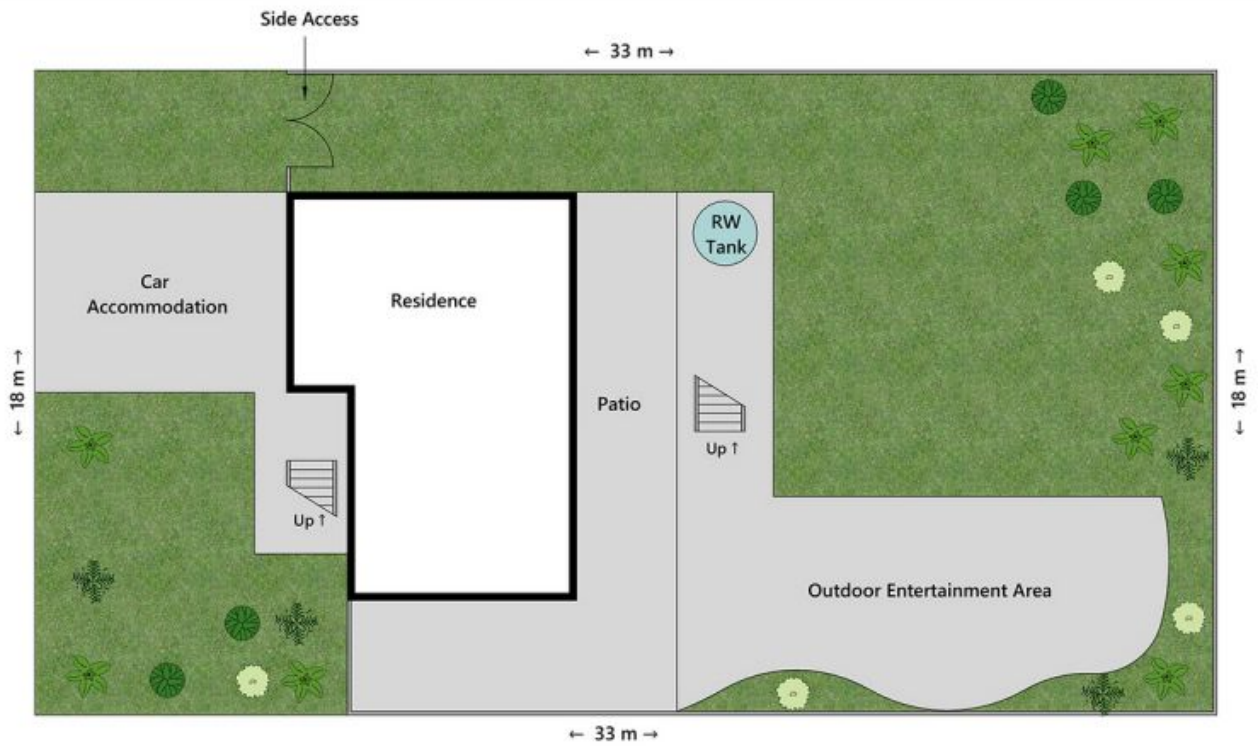
0414145010



Approx. Area | Internal 173 m² | External 62 m² | Total 235 m²



UNLESS OTHERWISE STATED, ALL DIMENSIONS ARE IN METRES. THIS PLAN AND INFORMATION CONTAINED WITHIN IS FOR ILLUSTRATIVE PURPOSES ONLY AND NOT GUARANTEED TO BE EXACT. INTERESTED PARTIES SHOULD MAKE THEIR OWN ENQUIRIES.



Lot Area 595 m²



UNLESS OTHERWISE STATED, ALL DIMENSIONS ARE IN METRES. THIS PLAN AND INFORMATION CONTAINED WITHIN IS FOR ILLUSTRATIVE PURPOSES ONLY AND NOT GUARANTEED TO BE EXACT. INTERESTED PARTIES SHOULD MAKE THEIR OWN ENQUIRIES.