



3 Latana Court REGENTS PARK, QLD

4 

2 

1 

LIVING TO REALLY ENJOY

Price:

Offers Over \$399,000



Griffiths & Gunn

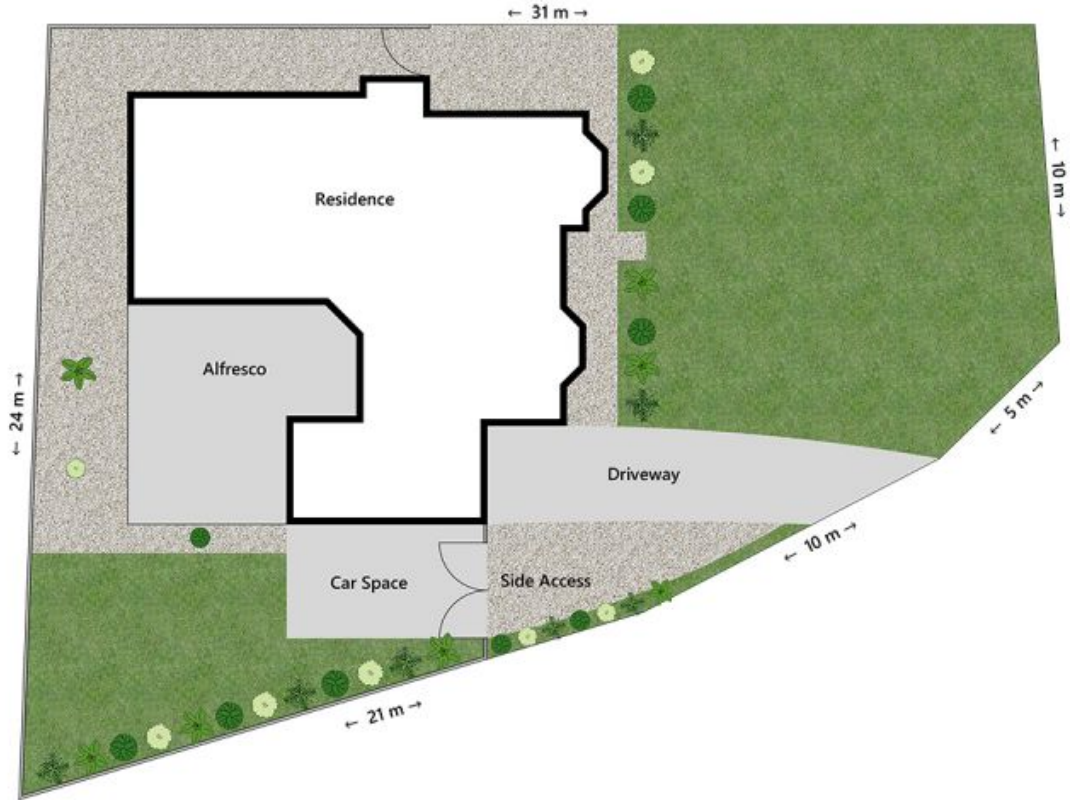
0430445750



Approx. Floor Area | Internal 130 m² | External 42 m² | Total 172 m²

UNLESS OTHERWISE STATED, ALL DIMENSIONS ARE IN METRES. THIS PLAN AND INFORMATION CONTAINED WITHIN IS FOR ILLUSTRATIVE PURPOSES ONLY AND NOT GUARANTEED TO BE EXACT. INTERESTED PARTIES SHOULD MAKE THEIR OWN ENQUIRIES.





Lot Area | 605 m²

UNLESS OTHERWISE STATED, ALL DIMENSIONS ARE IN METRES. THIS PLAN AND INFORMATION CONTAINED WITHIN IS FOR ILLUSTRATIVE PURPOSES ONLY AND NOT GUARANTEED TO BE EXACT. INTERESTED PARTIES SHOULD MAKE THEIR OWN ENQUIRIES.

