

STONE



5/134 Johnson Road HILLCREST, QLD

3 

2 

1 

SPACIOUS OUTDOOR LIVING

Price: \$293,000

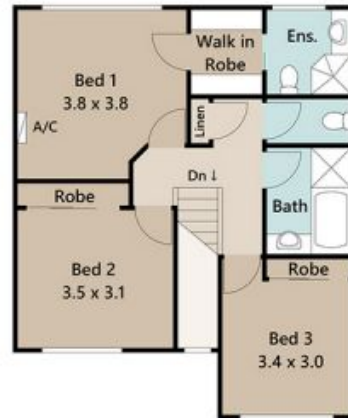


Lee & Roslyn

0414145010



GROUND FLOOR



UPPER FLOOR

Approx. Floor Area | Internal 128 m² | Courtyard 120 m²

UNLESS OTHERWISE STATED, ALL DIMENSIONS ARE IN METRES. THIS PLAN AND INFORMATION CONTAINED WITHIN IS FOR ILLUSTRATIVE PURPOSES ONLY AND NOT GUARANTEED TO BE EXACT. INTERESTED PARTIES SHOULD MAKE THEIR OWN ENQUIRIES.

