



2 Kimridge Drive HERITAGE PARK, QLD

5  2  2 

SIZE WILL SURPRISE

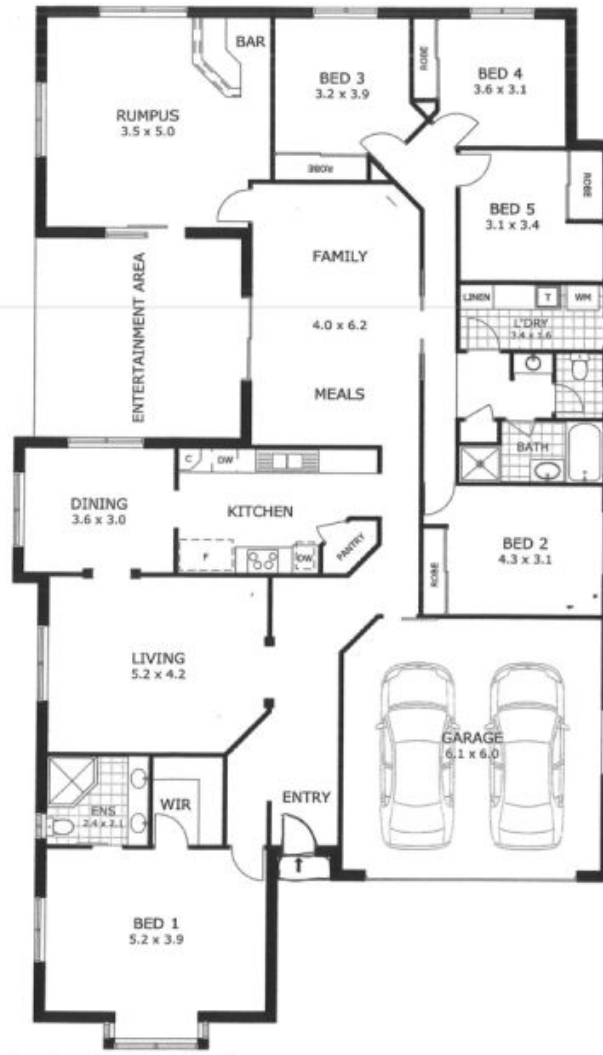
From the outside you would never guess the surprises that await you . classic good looks, free-flowing design and exquisite entertainers style were the key design criteria in creating this striking home, located in a cul de sac in Heritage Park.

Price: \$529,000



Claire Franklin

0430 438 889



Scale in metres. Indicative only. Dimensions are approximate. All information contained herein is gathered from sources we believe to be reliable. However we cannot guarantee its accuracy and interested parties should rely on their own enquiries.

Total	- 292 m²
Living	- 231 m ²
Garage	- 38 m ²
Entertainment	- 23 m ²



2 Kimridge Street, Heritage Park