



14 Isabella Court HERITAGE PARK, QLD 4 2 2

A DELIGHTFUL FAMILY HOME IN A CUL DE SAC LOCATION

Situated in a sought after pocket of Heritage Park is this lovely 4 bedroom ensuite contemporary home. With 4 great sized bedrooms and 2 large living areas this home is sure to be a popular choice with todays modern family. The covered entertaining area ensures maximum entertaining , with music speakers and ceiling fans to add to the ambience.

As well as insulation, ceiling fans and tinted windows across the front of the home, all year comfort is guaranteed with ducted reverse cycle air conditioning.

Set in a quiet court this home is perfect for families, with local schools, bus stops, shops and access to the major road networks close by. This home is in the catchment area for Yugumbir State School

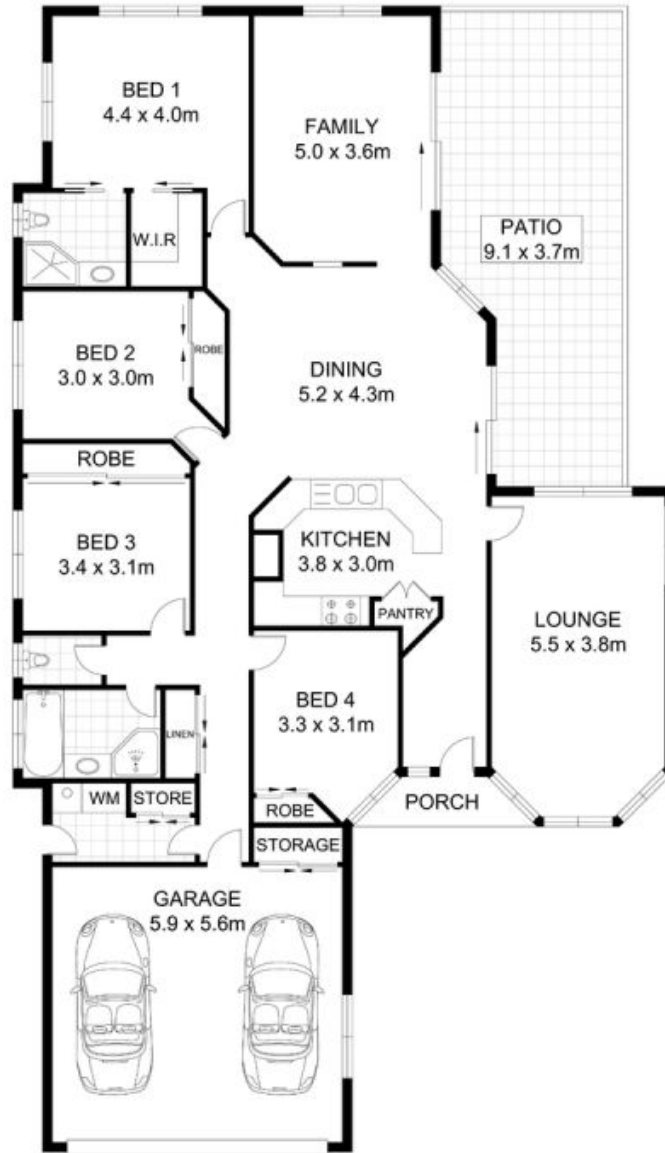
The 647m2 allotment is easy to maintain and allows more time to be spent entertaining with family and friends.

Price: Offers Over \$440,000



Claire Franklin

0430 438 889

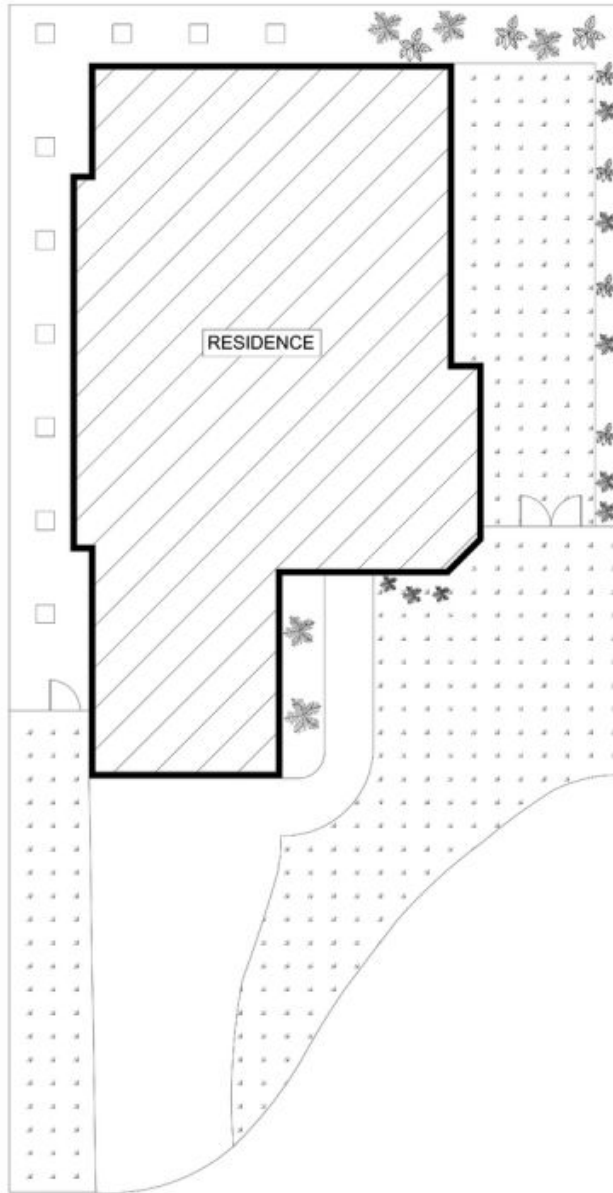


Scale in metres, indicative only. Dimensions are approximate. All information contained herein is gathered from sources we believe to be reliable. However, we cannot guarantee its accuracy and interested persons should rely on their own enquiries.

INT : 170.11 m²
 EXT : 34.04 m²
 GARAGE : 33.04 m²



14 Isabella Court, Heritage Park



0 1 2 3

Scale in metres, indicative only. Dimensions are approximate. All information contained herein is gathered from sources we believe to be reliable. However, we cannot guarantee its accuracy and interested persons should rely on their own enquiries.



14 Isabella Court, Heritage Park