

38 Owens Street Spring Farm, NSW

4

1

2

2

Summer ready

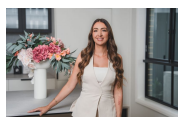
We are extremely excited to present to you this stunning four-bedroom home set in a quiet street only walking distance to Riverside Estate's lake, children's park and dog park. The property is perfect for large or growing families with a total of three living areas plus a separate office allowing everyone to have their own sense of space.

Price: \$1,176,000



Anthony Grima

0421 228 414



Rebecca Philp

0403 613 271

38 Owens Street
Spring Farm



The floor plan is not to scale, measurements are indicative and in metres. Exterior elements are not in position. Plans should not be relied on, interested parties should make and rely on their own enquiries. All other information provided has been collected from reliable sources but cannot be guaranteed for accuracy.

38 Owens Street
Spring Farm

STONE



The floor plan is not to scale; measurements are indicative and in metres. All features included in this 3D plan are for inspiration purposes only. This is not an exact replica of the property or the position of exterior elements. Plans should not be relied on. Interested parties should make and rely on their own enquiries.