



207/181-183 Great Western Highway Mays Hill, NSW



### Executive-style two-bedroom apartment

Price: \$480,000

Residing within "The Loft" apartments, you will find this stylish and contemporary two-bedroom dwelling. The residence offers modern interiors, quality inclusions and plenty of space. Not far from Parramatta CBD, close to bus services, several parks, the Sydney Murugan Temple, Westmead Hospitals, Parramatta West Public School and Parramatta High School. With direct access to the Great Western Highway and M4 Motorway.



**Andrea Sant**

0404 872 125



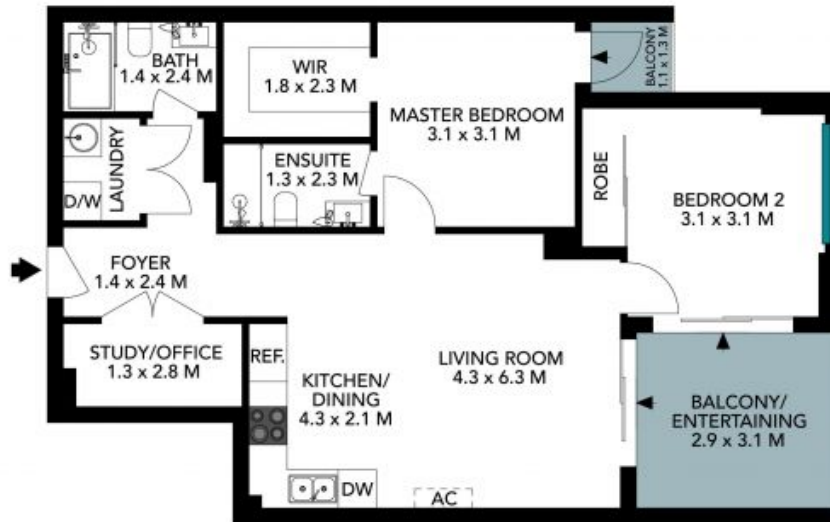
**Andrea Sant**

0404 872 125

207/181 Great Western Highway  
Mays Hill



(NOT IN POSITION)



The floor plan is not to scale, measurements are indicative and in metres. Exterior elements are not in position. Plans should not be relied on. Interested parties should make and rely on their own enquiries. All other information provided has been collected from reliable sources but cannot be guaranteed for accuracy.

207/181 Great Western Highway  
Mays Hill



The floor plan is not to scale; measurements are indicative and in metres. All features included in this 3D plan are for inspiration purposes only. This is not an exact replica of the property or the position of exterior elements. Plans should not be relied on. Interested parties should make and rely on their own enquiries.