



24/600 Mowbray Road Lane Cove North, NSW



Garden Retreat

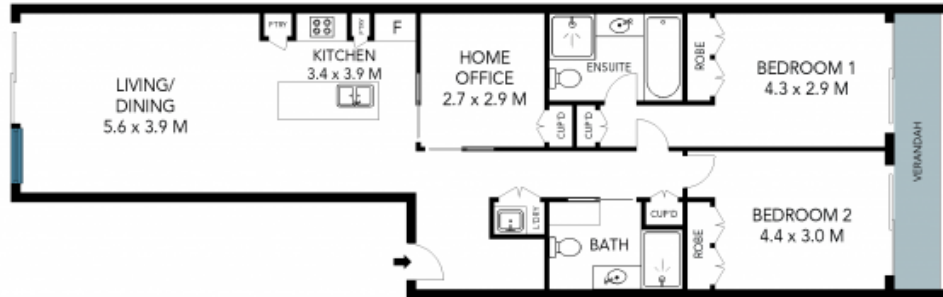
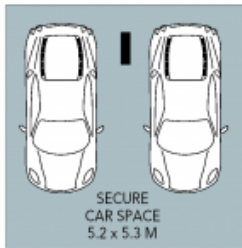
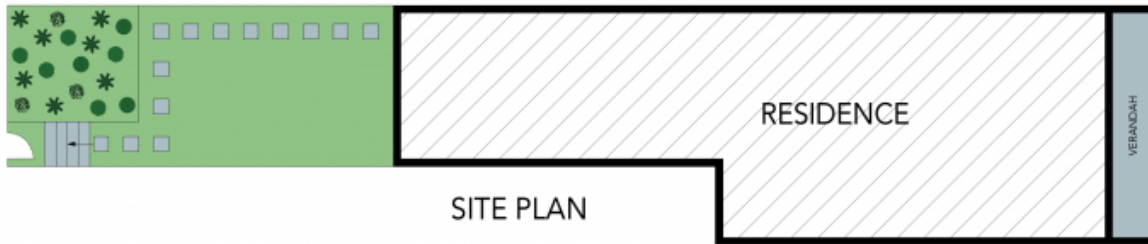
Featuring a high-end finish inside and out, this large 175sqm garden apartment is beautifully designed with lifestyle and space in mind. Boasting a sizable study/home office and generous bedrooms that open outdoors to a covered verandah with green private views, this home has a sensational entertainers' garden courtyard that is north facing and flooded with natural light. In a prime setting approx. Approximately only 8 mins drive to Chatswood, it is calling out location, lifestyle and convenience!

Price: Contact Agent - Vincent Goh
Council Rates: \$359.60 p/q
Water Rates: \$160.00 p/q
Strata Rates: \$1,406.60 p/q



Vincent Goh

0412 316 797



The site plan and floor plan are not to scale; measurements are indicative and in metres. Bushes and trees are placed for illustration purposes. Plans should not be relied on. Interested parties should make and rely on their own enquiries. All other information provided has been collected from reliable sources but cannot be guaranteed for accuracy.