

1/19-21 Palm Street Ettalong Beach, NSW

3 

2 

2 

Luxury Meets Lifestyle

Welcome to 'The Palms' where luxury meets lifestyle, located in one of the most sought after enclaves the Central Coast has to offer. Designed to embrace the natural beauty of its coastal setting and within easy access of the beach, The Palms is a coastal sanctuary to suit any lifestyle.

Generous proportions allow family and living areas to integrate seamlessly, while each residence has been designed to capture the beauty surrounding. Featuring high-end appliances and premium finishes.

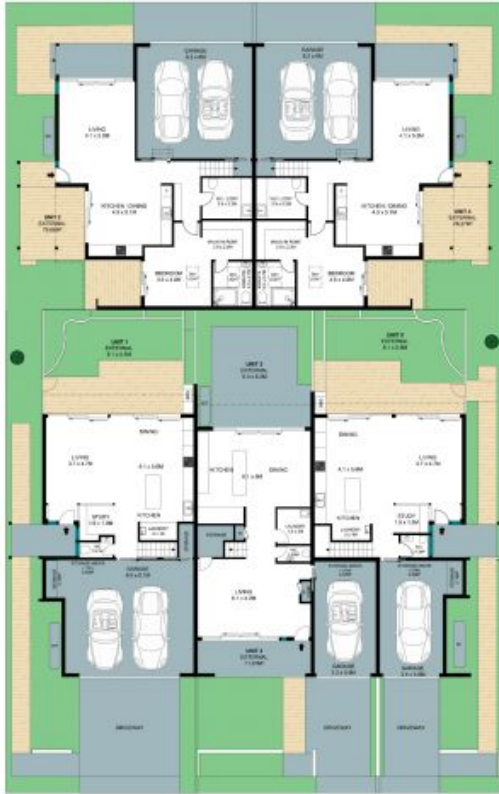
- Located just 5 minutes' walk from The Esplanade and Ettalong Beach.
- 2 private balconies with views.
- Generous family and living areas, perfect for entertaining or relaxing.
- Spacious kitchens with engineered quartz benchtops and high-end ILVE appliances.
- Three large bedrooms all with BIR and ample storage.
- Lavish landscaped gardens with private courtyard and yard.
- Lockup garage plus excellent storage.

Price: \$1,250,000

Stone Real Estate

02 4388 8888

Tumbi Umbi



GROUND FLOOR



UNIT 2 UNIT 4

FIRST FLOOR



UNIT 1 UNIT 3 UNIT 5

FIRST FLOOR



The site plan and floor plan are not to scale; measurements are indicative in meters. Bushes and trees are placed for illustration purposes. Plans should not be relied on. Interested parties should make and rely on their own inquiries. All other information provided has been collected from reliable sources but cannot be guaranteed for accuracy.