

12/8 Ludcke Lane Beenleigh, QLD 2  1  1 

Ready to be lived in!

Offering boutique living, this property is vacant and can be moved into straight away. Or alternatively, makes for an incredible investment opportunity (returning between \$330-\$350 per week).

Nestled within the heart of Beenleigh in a tidy townhouse complex, walking distance to bus stops, trains and your choice of supermarkets. And a short drive to the motorway.

This well-designed townhouse, invites an open plan interior. Generous sized living space and full-sized kitchen and separate laundry with an extra toilet. Upstairs homes 2 large sized bedrooms with built in cupboards and an alfresco styled balcony.

- Available now
- Neatly presented and freshly painted
- New appliances
- Air conditioner
- Ceiling fans in all bedrooms
- 40km to the heart of the Gold Coast

Price: MID TO HIGH 200s



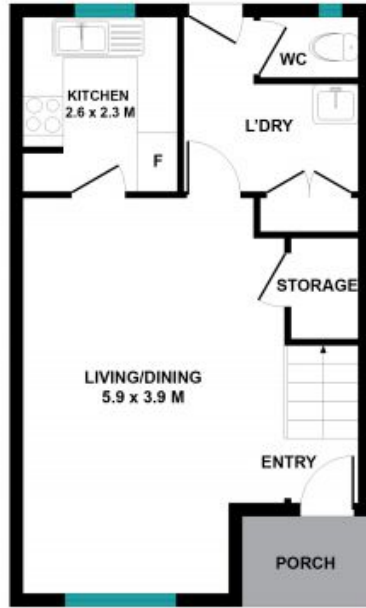
Tara Lindley

0450 550 391

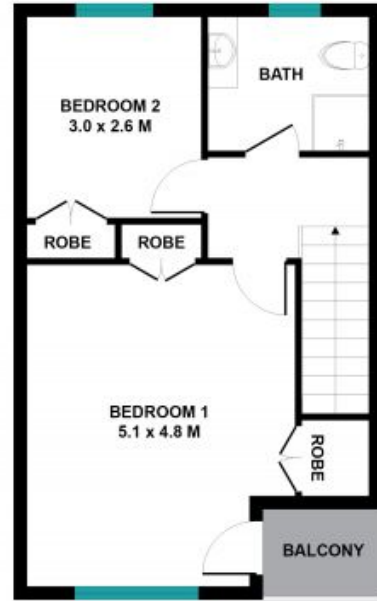


John Tatnell

0481 430 111



GROUND FLOOR



FIRST FLOOR

TOTAL SQM : 95 SQM

The site plan and floor plans are not to scale measurements are indicative and in metres. Boxes and lines are placed for illustrative purposes. Plans should not be relied on. Interested parties should make and rely on their own enquiries. All other information provided has been collected from reliable sources but cannot be guaranteed for accuracy.

12/8 Ludcke Lane, Beenleigh

