



1076 Yarramalong Road Wyong Creek, NSW

4 

1 

10 

SOLD by Scott Wall!

Set on 5 acres of lush green Countryside, this loveable rural holding is the perfect opportunity for those looking to escape to their own little piece of paradise in the Yarramalong Valley.

Price: \$1,600,000

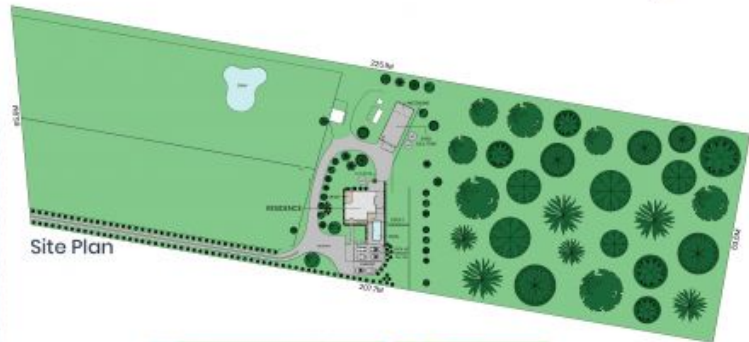


Scott Wall

0413 965 616

Lifestyle Central Coast

02 4315 2922



Internal Area: 223sqm
External Area: 281sqm
Land Area: 13,900sqm



The site plan and floor plan are not to scale; measurements are indicative and in metres. Bushes and trees are placed for illustration purposes. Plans should not be relied on. Interested parties should make and rely on their own enquiries. All other information provided has been collected from reliable sources but cannot be guaranteed for accuracy.