



B102/819 New Canterbury Road Dulwich Hill, NSW



Executive Style Living in Boutique Block

Set in a popular and well-maintained, architecturally designed building, this well-proportioned 1 bedroom apartment is well placed to enjoy an elevated peaceful outlook.

This ultra-convenient property offers quality living that is within easy reach of cafes, transport, shops and parks.

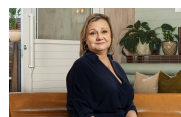
- * Contemporary kitchens featuring stainless steel appliances and stone bench tops
- * Ducted air conditioning, internal laundry
- * Spacious bedroom with built-ins
- * Lift access to a secure car space
- * Short stroll to Yeo park, Dulwich Hill village & Hurlstone Park village
- * Moments away to Light rail, trains and buses

Price: Leased
Available Date: 31/01/2023



Georgina Williams

0434 808 839



Diane Shipley

0413 137 874