



3/31 Lorne Avenue Killara, NSW 4 1 1

Oversized apartment in Killara

Oversized 4-bedroom apartment offering house-like proportions and space, to accommodate the family and home office. Flooded with light from its top floor, east/north/west aspect, it features recently renovated, super-sized interiors that flow to a sundrenched enclosed balcony for effortless living & entertaining. Brand new engineered oak flooring throughout, upgraded kitchen and renovated laundry. Perfect for downsizers, investors or a young family, it's nestled peacefully to the rear of a small boutique block directly opposite Regimental Park on the jacarandas blossom street & minutes walk to rail.

Price:

Contact Agent



Matt Payne

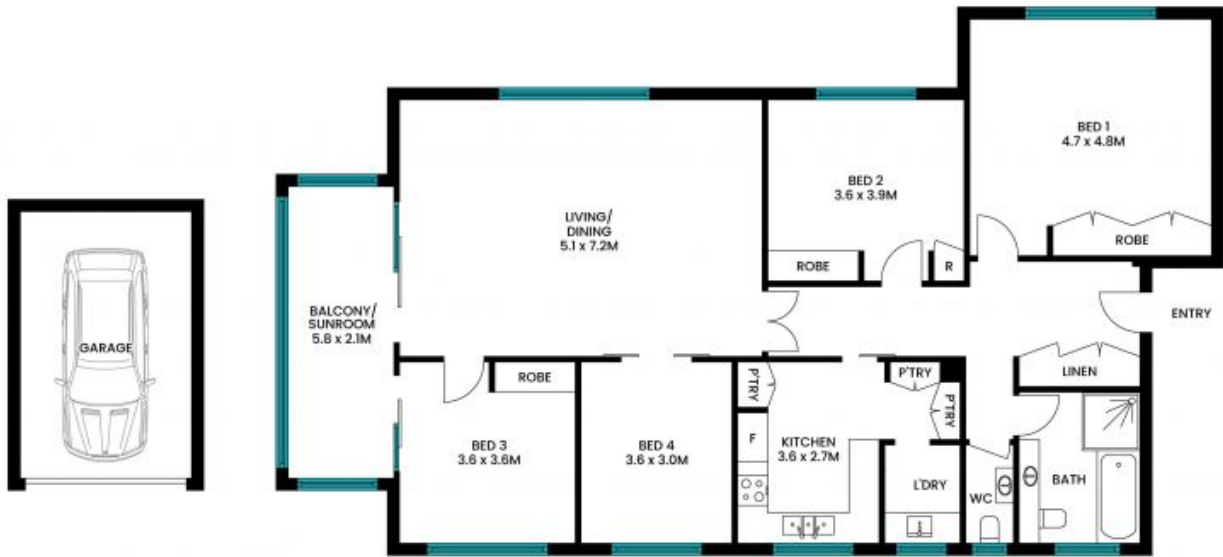
0435 825 242



Ryan Woo

0410 884 680

3/31 Lorne Avenue
Killara



Internal area: 170m²
Garage area: 23m²
Total area: 193m²

The site plan and floor plan are not to scale; measurements are indicative and in metres. Bushes and trees are placed for illustration purposes. Plans should not be relied on. Interested parties should make and rely on their own enquiries. All other information provided has been collected from reliable sources but cannot be guaranteed for accuracy.