

32 Hallam Avenue Lane Cove, NSW



Family Friendly Home

This spacious, single-level home is located in a quiet, family-friendly neighbourhood, and only a moment's stroll to Lane Cove West Public School and Fig Tree Village Shops.

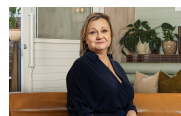
Featuring:

- Neutral, light-filled interiors with a versatile floor plan offering multiple living areas and a sunny, level rear garden ideal for entertaining.
- Expansive Living with Sunroom, Polished Timber Floors & Reverse Cycle Air Conditioning
- Rear Family Room with French Doors Opening to Enclosed Child-Friendly Garden
- Stylish, Well-Equipped Modern Kitchen with Stone Bench Tops & Dishwasher
- Light-Filled Bedrooms All with Built-Ins & Timber Floors
- 2nd Bathroom with Combined Laundry
- Home Office Or Guest Bedroom
- 2 Car Parking

Price: \$1,475 per week

Bond: \$5,900

Available Date: 01/04/2024



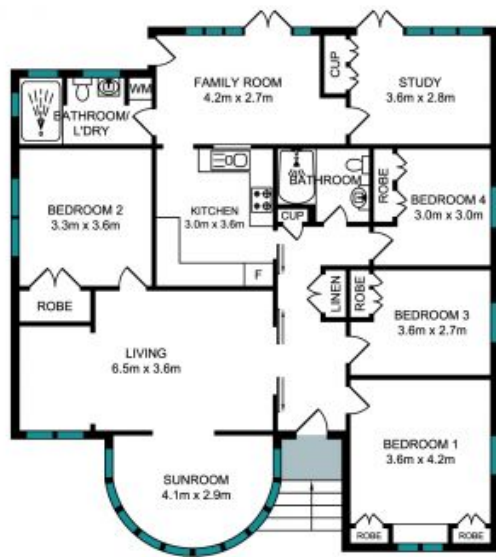
Diane Shipley

0413 137 874



Jaydn Frintzilas

0468 998 294



FLOOR PLAN

SITE PLAN (NOT TO SCALE)

The Floor plan is not to scale, measurements are indicative and in meters. Exterior elements are not in position. Plans should not be relied on. Interested parties should make and rely on their own enquiries. All other information provided has been checked from reliable sources but cannot be guaranteed for accuracy.

32 Hallam Avenue, Lane Cove



STONE