

32 Hallam Avenue Lane Cove, NSW

4 2 2

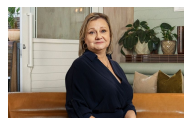
Family Friendly Home

This spacious, single-level home is located in a quiet, family-friendly neighbourhood, and only a moment's stroll to Lane Cove West Public School and Fig Tree Village Shops.

Featuring:

- Neutral, light-filled interiors with a versatile floor plan offering multiple living areas and a sunny, level rear garden ideal for entertaining.
- Expansive Living with Sunroom, Polished Timber Floors & Reverse Cycle Air Conditioning
- Rear Family Room with French Doors Opening to Enclosed Child-Friendly Garden
- Stylish, Well-Equipped Modern Kitchen with Stone Bench Tops & Dishwasher
- Light-Filled Bedrooms All with Built-Ins & Timber Floors
- 2nd Bathroom with Combined Laundry
- Home Office Or Guest Bedroom
- 2 Car Parking

Price: \$1,475 per week
Bond: \$5,900
Available Date: 01/04/2024



Diane Shipley

0413 137 874



Jaydn Frintzilas

0468 998 294

