



22/40-44 Edgeworth David Avenue Waitara, NSW



**Well layout apartment, functional floor plan with pleasant outlook.**

The modern quality home is ideally located in a family-friendly neighborhood close to public transport, Hornsby Westfield, hospital, community facilities, and sought-after schools in both Public and Private sectors.

**Price:** Deposit Taken  
**Available Date:** 20/01/2023



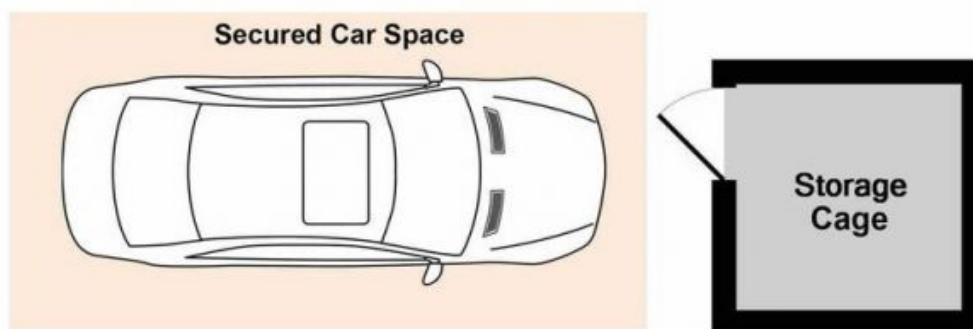
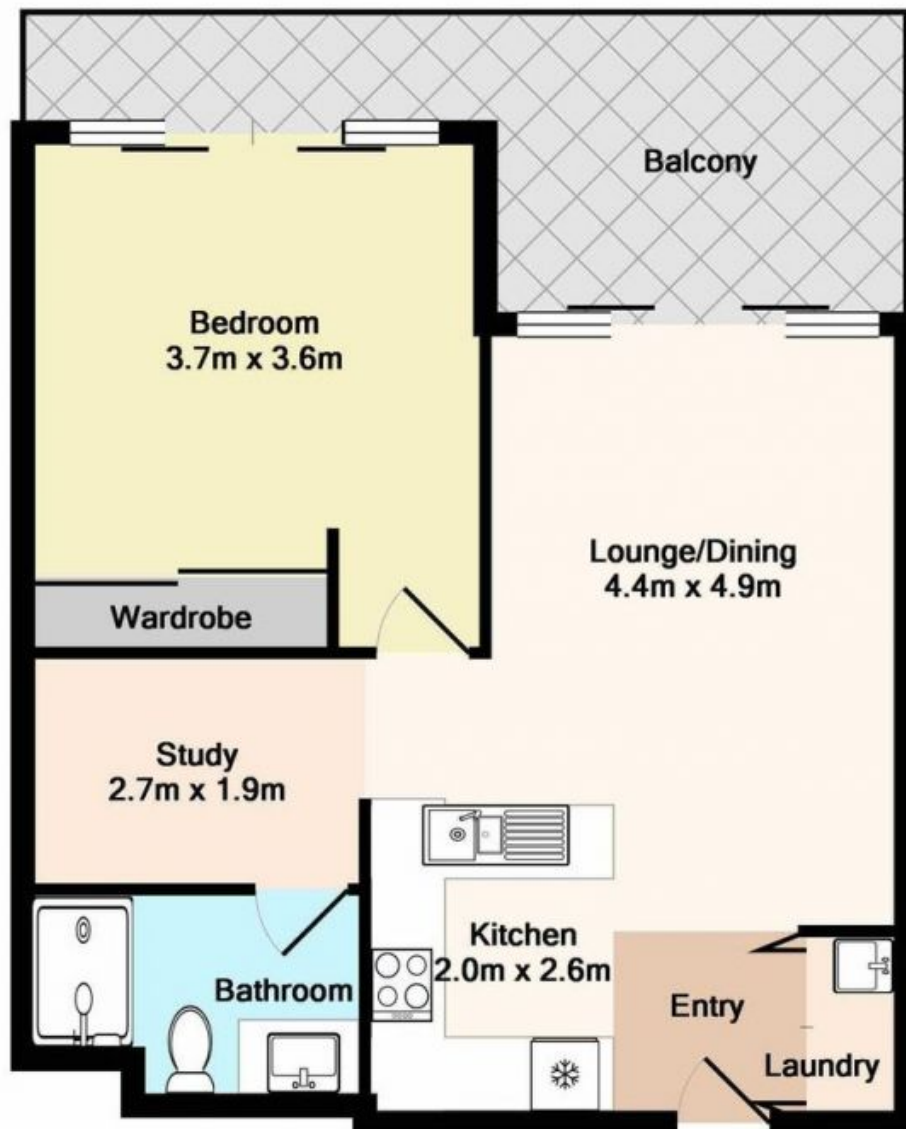
**Brad Sargent**

0413 773 423



**Frazer Downes**

0405 533 164



Dimensions are approximate. All information contained is gathered from sources we believe to be reliable. However we cannot guarantee its accuracy and interested persons should rely on their own enquiries.



**22/40-44 EDGEWORTH DAVID AVE,  
WAITARA**