



Mosman, NSW

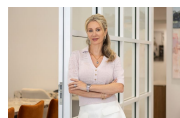


### Stunning Balmoral Residence

Top floor, north eastern corner position, enjoying uninterrupted water views across Balmoral, Manly and beyond.

Price:

Price Guide \$1,575,000 - \$1,650,000



**Marize Bellomo**

0414 972 203



**Alanna Tohme**

0450 862 088

STONE



(NOT IN POSITION)



The floor plan is not to scale. Measurements are indicative and in metres. Colours elements are not in position. Plans should not be relied on. Interested parties should make and rely on their own enquiries. All other information provided has been collected from reliable sources but cannot be guaranteed for accuracy.