

103A Copeland Road Beecroft, NSW

5 3 4

Expansive home on 1,557sqm (2 titles), 500m to Beecroft Primary

Price: Contact Agent
Council Rates: \$969.00 p/q
Water Rates: \$161.00 p/q

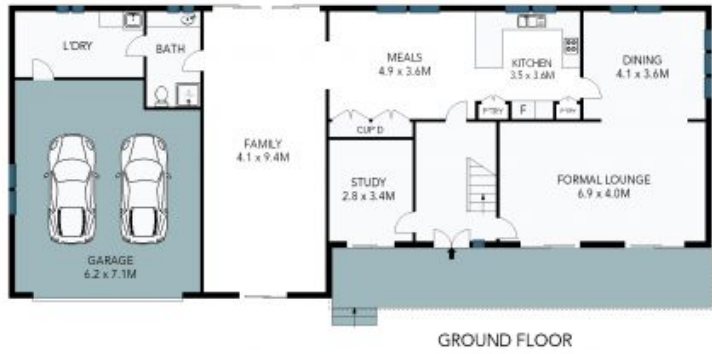
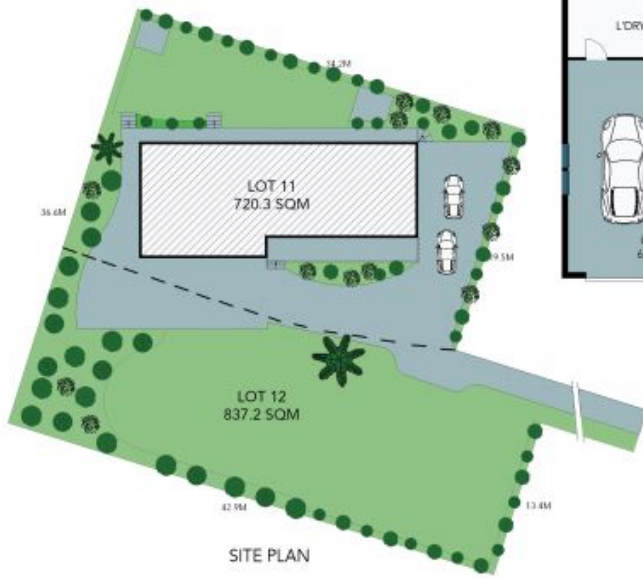


Kevin Dearlove
0403 338 302



Brian Kong
0435 333 383

103A&103B Copeland Road
Beecroft



Land Size: 1557.5sqm
 Internal Size: 293sqm



The site plan and floor plan are not to scale; measurements are indicative and in metres. Bushes and trees are placed for illustration purposes. Plans should not be relied on. Interested parties should make and rely on their own enquiries. All other information provided has been collected from reliable sources but cannot be guaranteed for accuracy.