



17 Vista Avenue Copacabana, NSW

4 2 1

Panoramic views

This uniquely versatile property is well located on the high side of the street, which allows it to take full advantage of the impressive beach, headland and ocean views, whilst always basking in plenty of natural light.

Price: Price guide on request
Council Rates: \$2,773.58/year (approx)

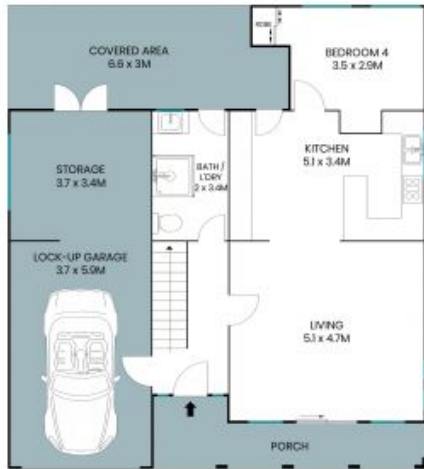


Andrew Thomson

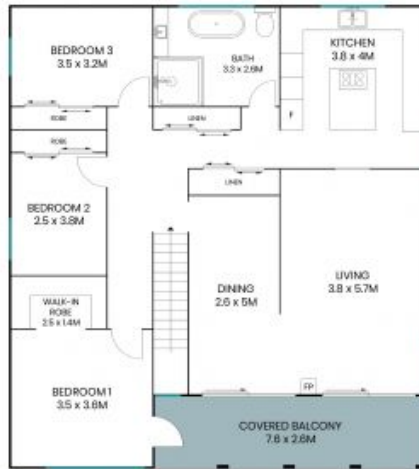
0405 103 077

17 Vista Avenue
Copacabana

STONE



Ground Level



Upper Level



Site Plan

Internal Area: 215sqm
External Area: 42sqm
Land Area: 563sqm



The site plan and floor plan are not to scale; measurements are indicative and in metres. Bushes and trees are placed for illustration purposes. Plans should not be relied on. Interested parties should make and rely on their own enquiries. All other information provided has been collected from reliable sources but cannot be guaranteed for accuracy.