



4/76 Whitfield Parade Hurstville Grove, NSW

3

2

2

### Spacious Hamptons-inspired haven in exclusive waterside enclave

A rare opportunity to enter the tightly-held Oatley Bay locale has arisen in an elegant and spacious package.

Price: \$1,600,000

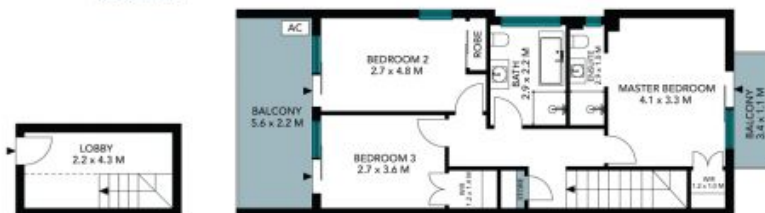


**Terry Gareb**

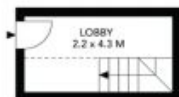
0424 523 630



Site Plan



First Floor



Basement



Basement  
(NOT IN POSITION)



Basement  
(NOT IN POSITION)



Ground Floor



The site plan and floor plan are not to scale; measurements are indicative and in metres. Bushes and trees are placed for illustration purposes. Plans should not be relied on. Interested parties should make and rely on their own enquiries. All other information provided has been collected from reliable sources but cannot be guaranteed for accuracy.

4/76 Whitfield Parade  
Hurstville Grove

STONE



Basement



First Floor



Basement



Basement



Ground Floor



The floor plan is not to scale; measurements are indicative and in metres. All features included in this 3D plan are for inspiration purposes only. This is not an exact replica of the property or the position of exterior elements. Plans should not be relied on. Interested parties should make and rely on their own enquiries.