



WISEMANS FERRY, NSW

3 

1 

2 

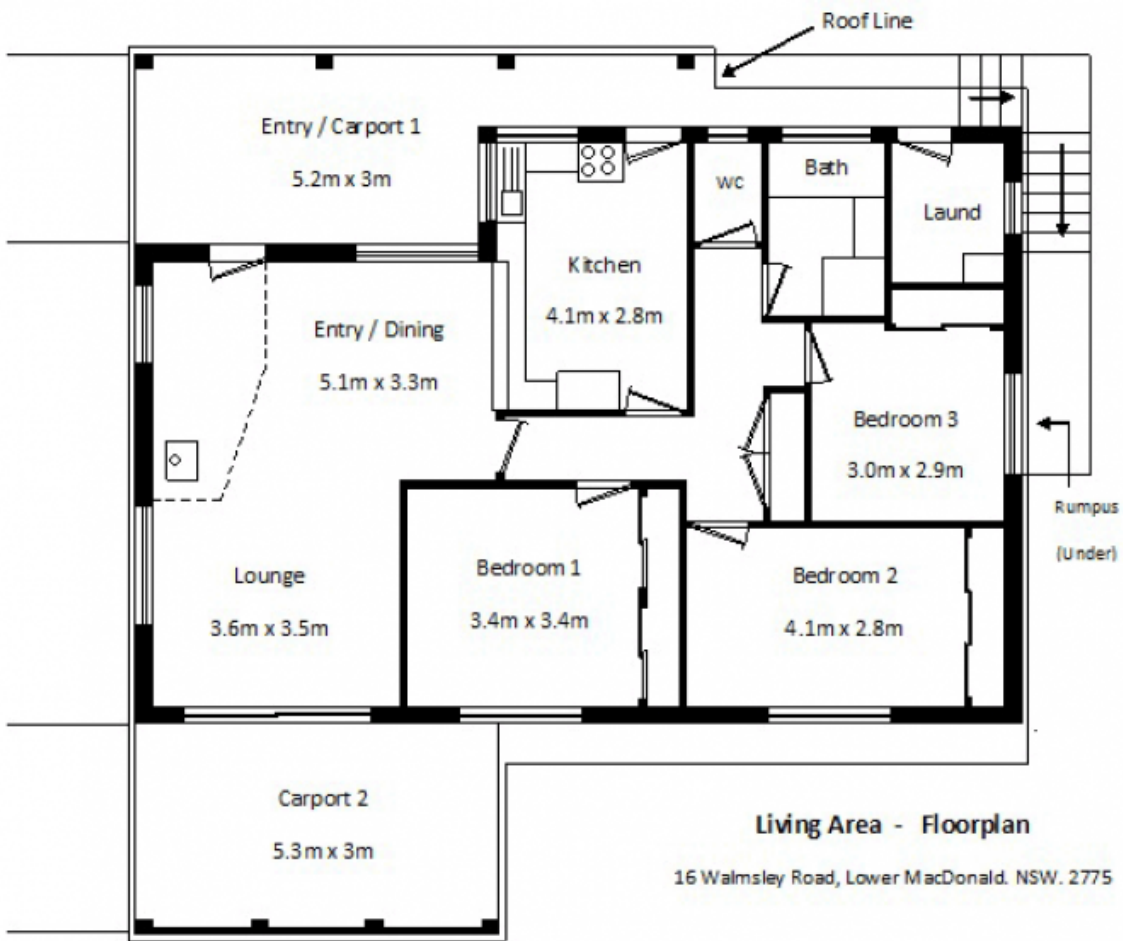
READY FOR YOU TO MOVE IN AND ENJOY THE LIFESTYLE!

Located at 16 Walmsley Road, Lower MacDonald, just 3km from the town center of Wisemans Ferry is this well presented 3 bedroom brick and tile home. Its a rural residential area with level access from the road and beautiful views at the rear. This home offers:

Price:

SOLD BY WFR

Stone Real Estate -
Head Office



Living Area - Floorplan

16 Walmsley Road, Lower MacDonal. NSW. 2775