

10/68 Johnston Crescent Lane Cove, NSW



SOLD BY HANNY JAPRI

Renovated oversized townhouse situated at the rear of the complex with a spacious alfresco entertaining area

Stylish and modern, this beautifully presented townhouse in the heart of Lane Cove moments from Lane Cove village is a must see. Located in a peaceful and leafy pocket of the suburb, this property offers convenience, comfort, and sophistication. Very short walk to express buses to City, Chatswood and Macquarie Park.

As you step inside this townhouse located at the rear of this boutique complex, you are greeted by an open-plan living and dining areas with stunning timber flooring throughout and plenty of natural light.

- Three good-size bedrooms with built-ins, master includes walk-in robe and ensuite
- Oversized double lock-up garage and workshop with internal access
- Air conditioning throughout
- Renovated open-plan gas kitchen with butler's pantry and European laundry
- Downstairs guest powder room

For more information or to arrange an inspection, please contact Hanny Japri on 0423 053 1...

Price: Sold - Contact agent
Water Rates: \$195.00 p/q
Strata Rates: \$1,467.00 p/q



Hanny Japri

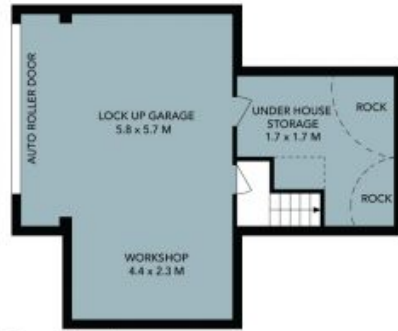
0423 053 180



Hanny Japri

0423 053 180

10/68 Johnston Crescent
Lane Cove



Ground Level



Upper Level



Entrance Level



Site Plan



The site plan and floor plan are not to scale; measurements are indicative and in metres. Bushes and trees are placed for illustration purposes. Plans should not be relied on. Interested parties should make and rely on their own enquiries. All other information provided has been collected from reliable sources but cannot be guaranteed for accuracy.

10/68 Johnston Crescent
Lane Cove



The floor plan is not to scale; measurements are indicative and in metres. All features included in this 3D plan are for inspiration purposes only. This is not an exact replica of the property or the position of exterior elements. Plans should not be relied on. Interested parties should make and rely on their own enquiries.