

36/8 Maida Road Epping, NSW



### Oversized ground floor apartment with 125sqm on title

This near new apartment offers a neat courtyard with smart modern interiors and sense of privacy that is rare to find in apartment living. Close to Forest Park and offers perfect low maintenance living for families, busy professionals or downsizers. From its whisper quiet setting, it's an easy stroll to schools, parks, Epping station, shopping and Eastwood.

**Price:** \$665,000.00  
**Council Rates:** \$488.40 p/q  
**Water Rates:** \$156.70 p/q  
**Strata Rates:** \$633.83 p/q



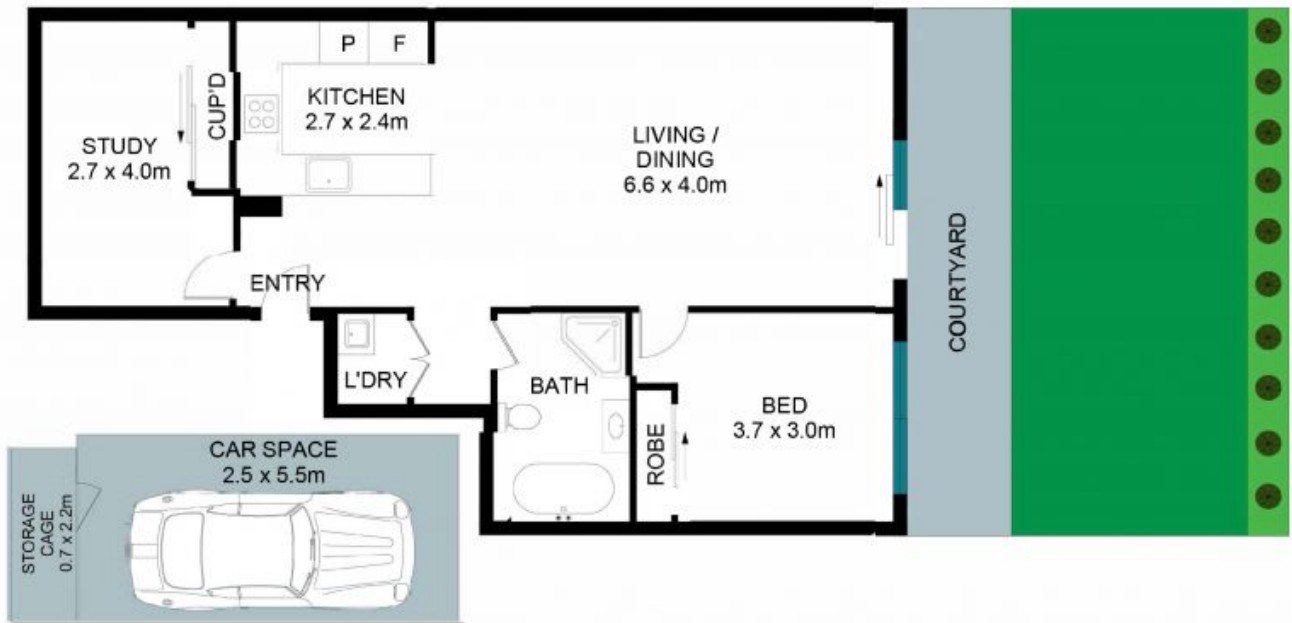
**Jessica Zhou**

0412 733 135



**James Ramsay**

0420 665 913



The floor plan is not to scale; measurements are indicative and in metres. Exterior elements are not in position. Plans should not be relied on. Interested parties should make and rely on their own enquiries.

36/8 Maida Road, Epping



STONE