



6/18 Whitmore Crescent Watson, ACT



### Urban Haven

Showcasing an open plan living and dining room, overlooked by a balcony with mountain views, this lovely home absorbs warmth and light during the day that flows effortlessly throughout the entire residence. Local cafes, shops, schools and transport hubs are all within close proximity to the home, and only a short drive into Dickson and Canberra City offers a lifestyle of ultimate convenience.

Price:

\$500,000+



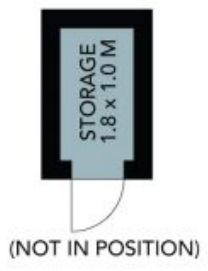
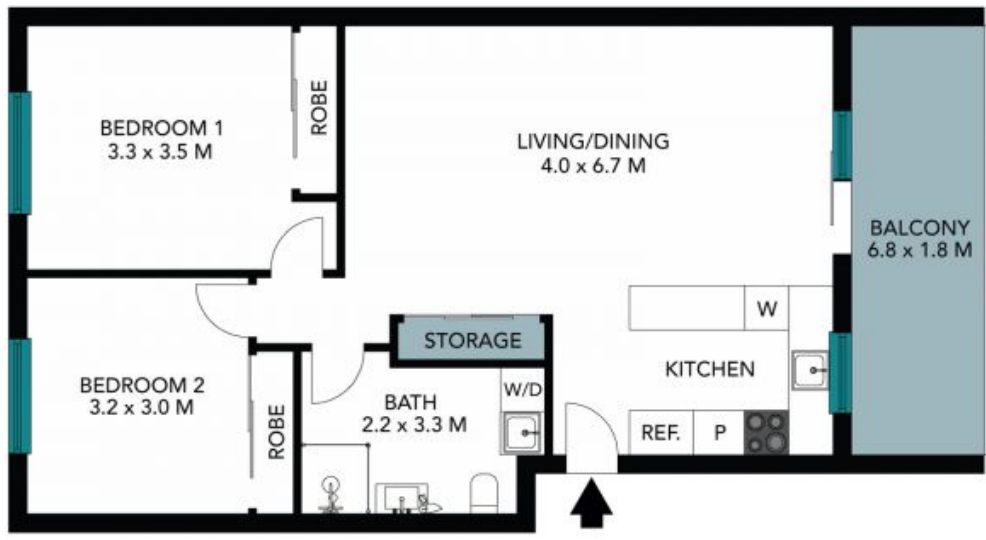
**Alex Ford**

0487 382 549



**Jess Doolan**

0477 775 773



The site plan and floor plan are not to scale; measurements are indicative and in metres. Bushes and trees are placed for illustration purposes. Plans should not be relied on. Interested parties should make and rely on their own enquiries. All other information provided has been collected from reliable sources but cannot be guaranteed for accuracy.

6/18 Whitmore Crescent  
Watson



The floor plan is not to scale, measurements are indicative and in metres. All features included in this 3D plan are for inspiration purposes only. This is not an exact replica of the property or the position of exterior elements. Plans should not be relied on. Interested parties should make and rely on their own enquiries.