



35 Purcell Street Elderslie, NSW

5 

2 

1 

An address to impress

Experience a very special location for living with this elegant five bedroom residence in the heart of Elderslie.

Price: \$1,269,000



Chris Philp

0418686511

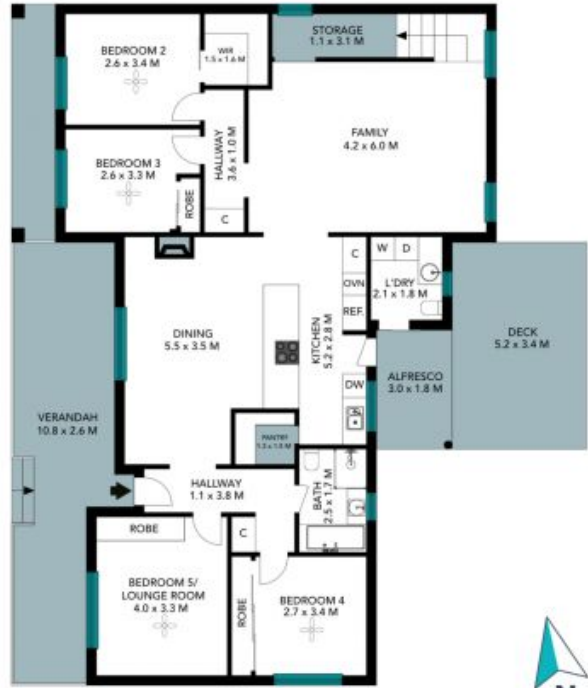
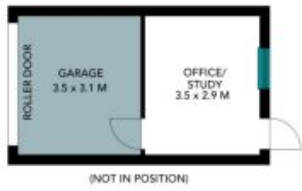


Chris Philp

0418686511

35 Purcell Street
Elderslie

STONE



The floor plan is not to scale, measurements are indicative and in metres. Exterior elements are not in position. Plans should not be relied on, interested parties should make and rely on their own enquiries. All other information provided has been collected from reliable sources but cannot be guaranteed for accuracy.

35 Purcell Street
Elderslie

STONE



First Floor



Ground Floor



The floor plan is not to scale; measurements are indicative and in metres. All features included in this 3D plan are for inspiration purposes only. This is not an exact replica of the property or the position of exterior elements. Plans should not be relied on. Interested parties should make and rely on their own enquiries.