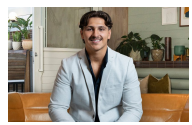


6/45 Shirley Road Wollstonecraft, NSW 1 [bed icon] 1 [kitchen icon] 1 [car icon]

Immaculately presented one bedroom apartment

- Very private immaculately presented one bedroom apartment in the heart of Wollstonecraft. Features include: Middle floor apartment at rear of the block Spacious open plan layout Good sized balcony with Harbour views Well maintained kitchen Sparkling main bathroom with separate bath / shower and internal laundry Huge main bedroom with built-ins Lock up garage

Price: \$520 per week Available Date: 01/03/2023



Ryan Zauner 0421 798 099



6 / 45 SHIRLEY ROAD WOLLSTONECRAFT

Floor plan disclaimer: Floor plan shown is for presentation purposes and is not part of any legal document or title. All measurements and figures are approximate. Interested parties should make their own enquiries. CAD drafting services: lanwei@gmail.com