



W1204/599 Pacific Highway St Leonards, NSW 1 1 1

**SOLD PRIOR TO AUCTION BY CHRIS REYNOLDS**

Positioned on Level 12 in the West Tower of the renowned Abode building by Stockland, and enjoying plenty of natural light, this apartment is conveniently positioned between St Leonards Station & Crows Nest shopping village, and is even closer to the upcoming Crows Nest Metro Station.

**Price:** Auction - Contact Agent  
**Council Rates:** \$291.00 p/q  
**Water Rates:** \$163.20 p/q  
**Strata Rates:** \$1,430.68 p/q



**Chris Reynolds**

0416 265 967



**Chris Reynolds**

0416 265 967

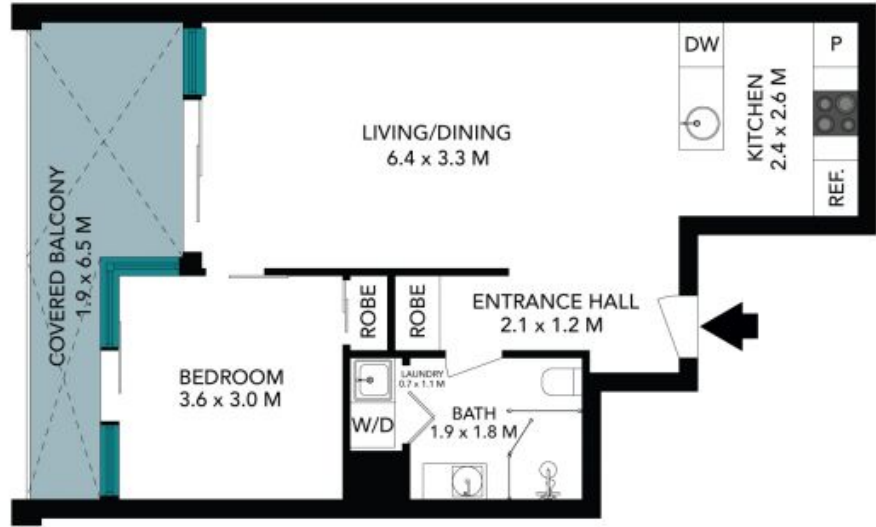
W1204/599 Pacific Highway  
St Leonards



The floor plan is not to scale; measurements are indicative and in metres. All features included in this 3D plan are for inspiration purposes only. This is not an exact replica of the property or the position of exterior elements. Plans should not be relied on. Interested parties should make and rely on their own enquiries.



W1204  
(NOT IN POSITION)



The floor plan is not to scale; measurements are indicative and in metres. Exterior elements are not in position. Plans should not be relied on. Interested parties should make and rely on their own enquiries. All other information provided has been collected from reliable sources but cannot be guaranteed for accuracy.