



18/27-33 Boundary Street Roseville, NSW

2 2 1

Prestigious North Facing Apartment With Two Master Bedrooms

Perfectly located within only a short stroll to Roseville train station, Chatswood CBD cafes, restaurants, shops, bus stations and local schools, this immaculately presented apartment is the epitome of comfort and convenience. It offers spacious combined living and dining area, open plan kitchen with gas cooktop and dishwasher, two master bedrooms with ensuite and extra guest toilet. Enjoying all day sunshine from north facing balcony.



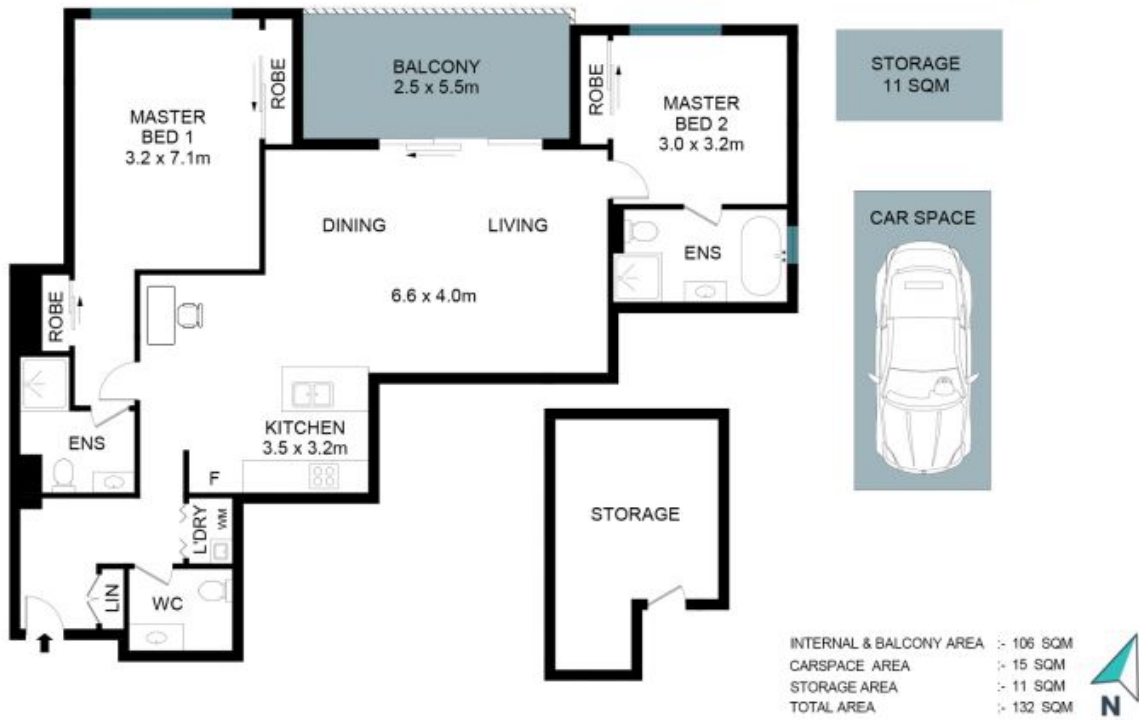
Joyce Jingxin Cai

0420 363 538



Jill Henry

0416 493 555



The site plan and floor plan are not to scale, measurements are indicative and in metres. Bushes and trees are placed for illustration purposes. Plans should not be relied on. Interested parties should make and rely on their own enquiries. All other information provided has been collected from reliable sources but cannot be guaranteed for accuracy.