



4/14 Good Street Westmead, NSW



### Brand new courtyard apartment

Prominently positioned on Parramatta's CBD fringe, Stone is proud to release a top shelf selection of apartments in a complex of 38. 'Grace' is a cutting edge triumph of residential design offering a collection of unique stylish apartments within a beautifully presented complex. It is designed and crafted by a local long-time established builder that proudly adds this project to their large accomplished portfolio of reputable quality builds that have been constructed across Sydney.

Price: \$685,000



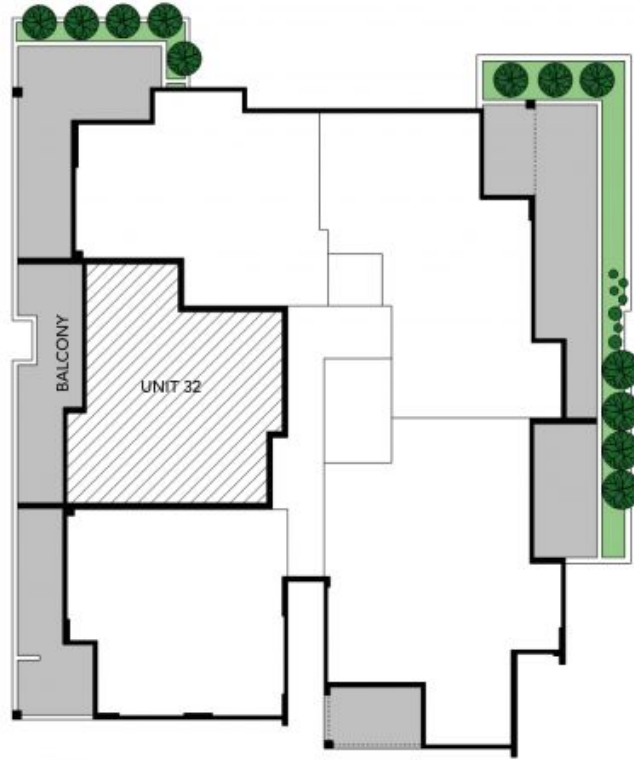
**Simar Gill**

0410 312 242



**Simar Gill**

0410 312 242



SITE PLAN

The site plan is not to scale. Balconies and trees are placed for illustration purposes. Plans should not be relied on. Intentional parties should make and rely on their own enquiries.



Unit 32, 14-18 Good Street, Westmead

STONE



The floor plan is not to scale, measurements are indicative and in metres. Exterior elements are not to position. Plans should not be relied on. Interested parties should make and rely on their own enquiries. All other information provided has been collected from reliable sources but cannot be guaranteed for accuracy.

Unit 32, 14-18 Good Street, Westmead

STONE