



35/14 Good Street Westmead, NSW

3

2

1

DISPLAY SUITE LOCATED AT 12 PALMER ST, PARRAMATTA
Attention First Home Buyers - \$35,000 Worth of Government Incentive

Prominently positioned on Parramatta's CBD fringe, Stone is proud to release a top shelf selection of apartments in a complex of 38. 'Grace' is a cutting edge triumph of residential design offering a collection of unique stylish apartments within a beautifully presented complex. It is designed and crafted by a local long-time established builder, JD Projects Group, that proudly adds this project to their large accomplished portfolio of reputable quality builds that have been constructed across Sydney.

Price:

Contact Agent



Simar Gill

0410 312 242



Simar Gill

0410 312 242

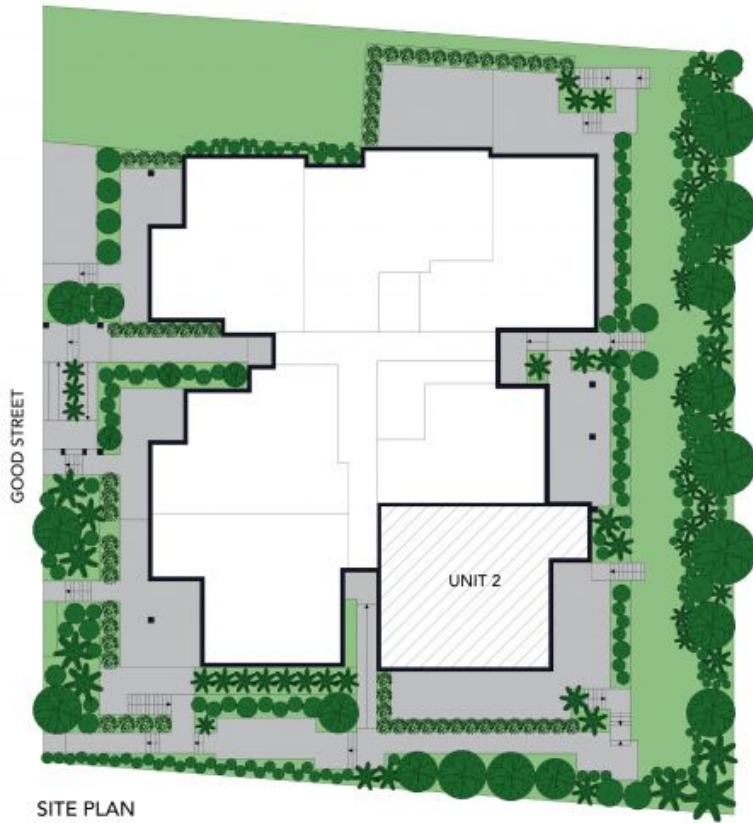


The floor plan to not to scale measurements are indicative and in metres. Exterior elements are not to position. Plans should not be relied on. Interested parties should make and rely on their own enquiries. All other information provided has been collected from reliable sources, but cannot be guaranteed for accuracy.

Unit 2, 14-18 Good Street, Westmead



STONE



SITE PLAN

The site plan is not to scale. Bushes and trees are placed for illustration purposes. Plans should not be relied on. Interested parties should make and rely on their own enquiries.

Unit 2, 14-18 Good Street, Westmead

