

20/573-585 Pacific Highway Killara, NSW      2    2    1

### North Facing Sunny Apartment, walk to rail location.

Providing both fresh modern style and easy convenience, this secured complex offers tranquility within a prestigious area. Within this bright and spacious property, entertain with a sun-filled living room. This apartment is also complimented by full brick construction, high ceilings and quality modern finishes throughout. Also included is a large and completely private balcony, perfect for relaxing.



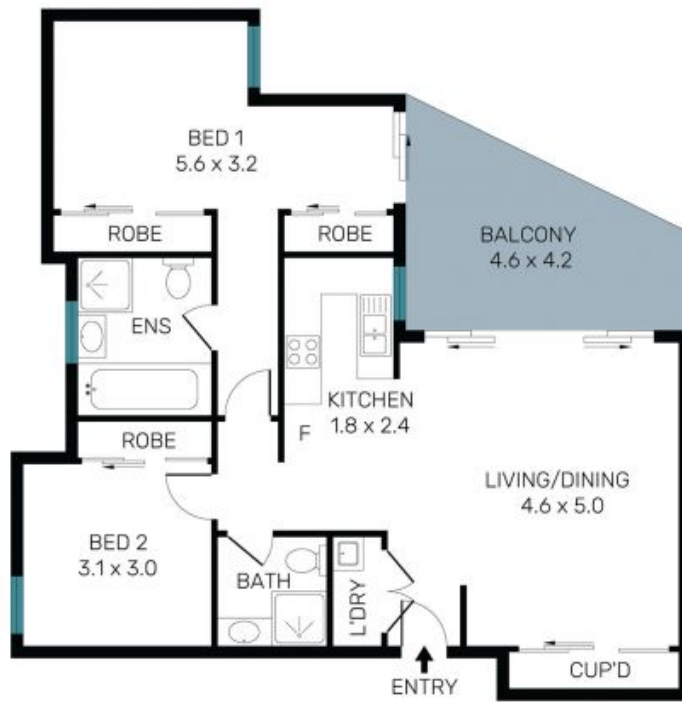
**Sahil Kotian**  
0434 172 588



**Matt Payne**  
0435 825 242

20/573-585 Pacific Highway  
Killara

STONE



INTERNAL & BALCONY AREA ~ 80 SQM  
GARAGE & STORAGE AREA ~ 13 SQM  
TOTAL AREA ~ 93 SQM



The site plan and floor plan are not to scale; measurements are indicative and in metres. Bushes and trees are placed for illustration purposes. Plans should not be relied on. Interested parties should make and rely on their own enquiries. All other information provided has been collected from reliable sources but cannot be guaranteed for accuracy.