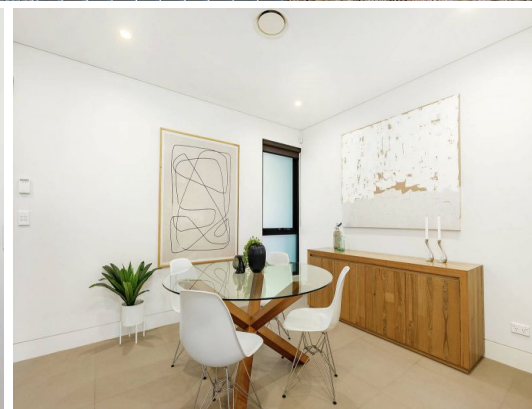


STONE



19A Kingston Road Camperdown, NSW



Superb terrace home in prime city-fringe locale

Presented in immaculate condition, this terrace home offers stylish inclusions and premium finishes to accommodate relaxed modern living. The well designed layout showcases a flowing ground floor with living areas extending to a peaceful garden courtyard, while the top floor provides sleeping zones immersed in comfort and privacy. It's minutes from schools, shops, eateries and city transport.

Price: Contact Agent

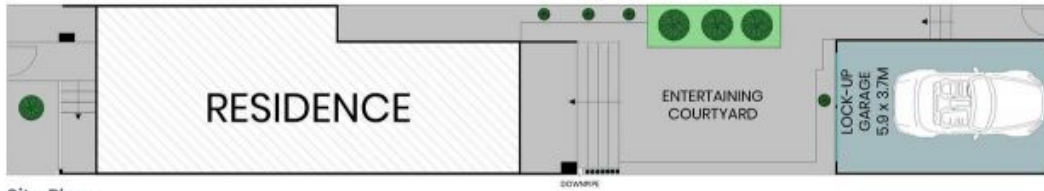
Council Rates: \$342.00 p/q

Water Rates: \$182.00 p/q



Adrian Vassallo

0406 484 994



Site Plan



Ground Floor



First Floor



The site plan and floor plan are not to scale; measurements are indicative and in metres. Bushes and trees are placed for illustration purposes. Plans should not be relied on. Interested parties should make and rely on their own enquiries. All other information provided has been collected from reliable sources but cannot be guaranteed for accuracy.

19a Kingston Road
Camperdown



First Floor



Ground Floor



The floor plan is not to scale; measurements are indicative and in metres. All features included in this 3D plan are for inspiration purposes only. This is not an exact replica of the property or the position of exterior elements. Plans should not be relied on. Interested parties should make and rely on their own enquiries.