

1863 Yarramalong Road Yarramalong, NSW 3 1 2

### "Yarramill Farm" on Wyong River

Escape to "Yarramill Farm" beside the tranquil Wyong River. Here you will discover an enchanting retreat where your family and companions can play. Nestled within the serene Yarramalong Valley, this versatile property spans over 19 acres of land, offering a blend of comfort, functionality, and abundant space tailored to your lifestyle.

Step into picture-perfect scenes as children frolic in the above-ground pool or around the spacious yard, while you unwind on the covered entertaining deck, enveloped in serenity.

The residence has three generously sized bedrooms featuring built-in wardrobes and ceiling fans. The two spacious living areas provide opportunity for relaxation and entertainment. The adjacent covered deck is north-facing and ideal for gatherings or quiet moments bathed in sunlight.

Indulge in the equestrian lifestyle with equine training arena, fenced paddocks and yards, stables, sheds, and carports...

...  
Within just 2 kilometres is the picturesque Yarramalong Village. Local facilities here inc...

**Inspect:** Saturday, 4th May 2024 11:00 - 11:45  
**Auction:** 18/05/2024 01:00 pm  
**Price:** AUCTION



**Shaun Coffey**

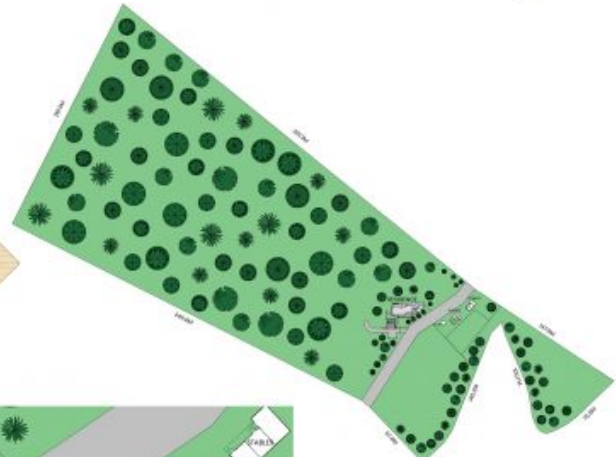
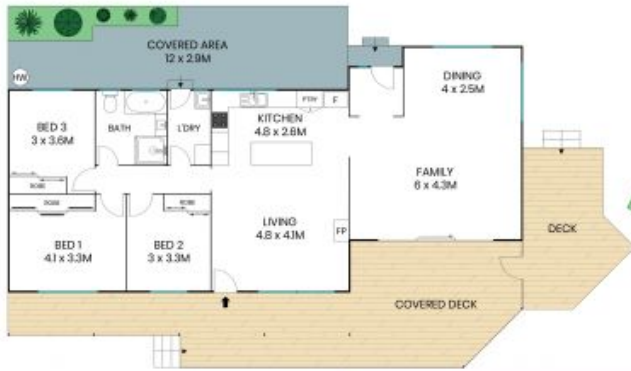
0417400556



**Trista Middlebrook**

02 4315 2922

1863 Yarramalong Road  
Yarramalong



Internal Area: 122sqm  
External Area: 246sqm  
Land Area: 7.87Ha



The site plan and floor plan are not to scale; measurements are indicative and in metres. Bushes and trees are placed for illustration purposes. Plans should not be relied on. Interested parties should make and rely on their own enquiries. All other information provided has been collected from reliable sources but cannot be guaranteed for accuracy.