

1/5 Winter Avenue Neutral Bay, NSW



Delightful Courtyard Apartment with City Views

Application approved and deposit taken

Price: \$850.00 pw

Available Date: 18/03/2023

This delightful, light and airy two-bedroom residence is located in a private and quiet position in 'Beechview', a boutique security building only a moments' walk to Neutral Bay & North Sydney's local shops, cafes, restaurants and public transport.

Features:

- To be freshly painted prior to tenancy commencing
- Floorboards throughout
- Spacious combined lounge and dining room
- Large entertainer's courtyard with stunning Harbour Bridge and city skyline views
- Well-designed kitchen with gas cooking, dishwasher and views of the Harbour Bridge
- Two generous sized bedrooms, both with built in robes
- Well sized bathroom with separate toilet and Internal laundry
- Single undercover car space and security intercom upon entry



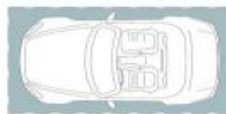
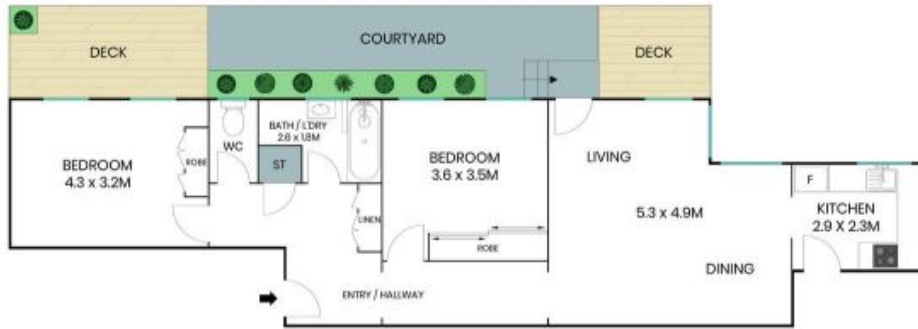
Christine O'Connell

0456 931 002



Ellie McClenaghan

0479 129 887



COVERED CAR SPOT
4.7 x 2.1M



The site plan and floor plan are not to scale; measurements are indicative and in metres. Bushes and trees are placed for illustration purposes. Plans should not be relied on. Interested parties should make and rely on their own enquiries. All other information provided has been collected from reliable sources but cannot be guaranteed for accuracy.

1/5 Winter Avenue
Neutral Bay



The floor plan is not to scale; measurements are indicative and in metres. All features included in this 3D plan are for inspiration purposes only. This is not an exact replica of the property or the position of exterior elements. Plans should not be relied on. Interested parties should make and rely on their own enquiries.