



6/71-75 Clyde Street Guildford, NSW



Impeccably presented apartment with huge indoor and outdoor living.

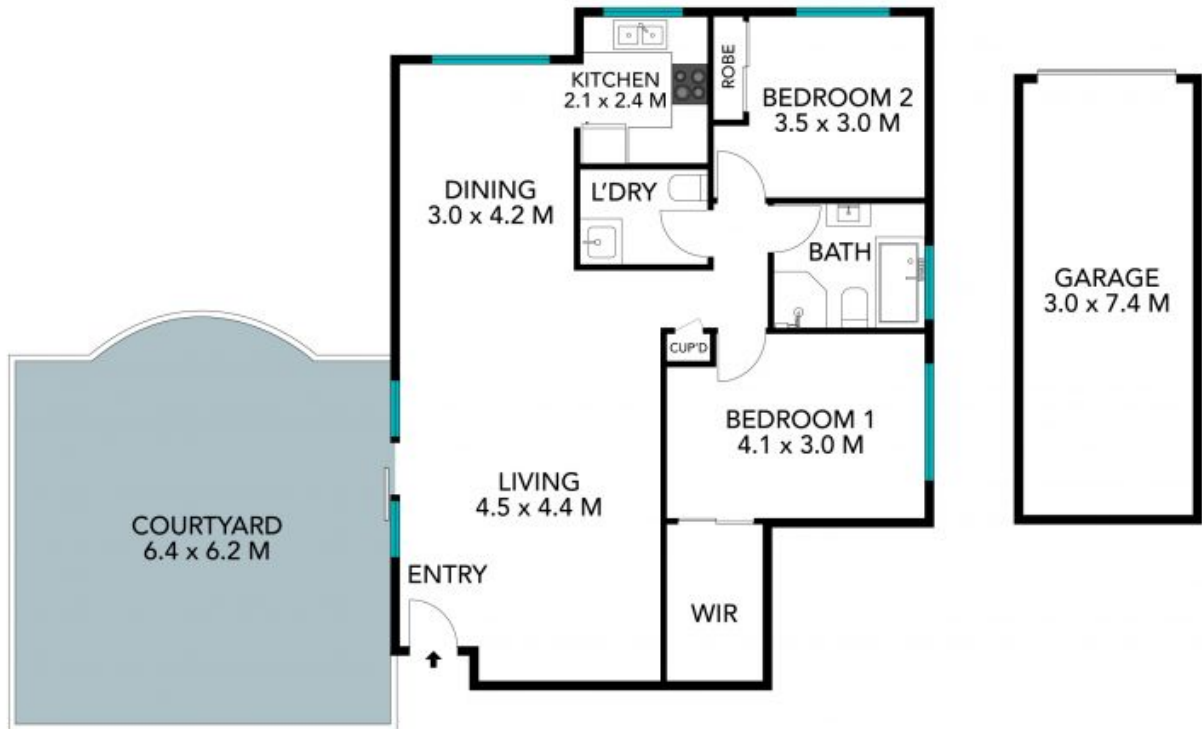
Immaculately maintained this second floor North/East facing apartment offers beautiful sundrenched interiors and easy walking access to specialty stores, shopping facilities, respected school's and transport.

Price: Deposit taken
Bond: \$1,760
Available Date: 27/02/2023



Enrico Catania

0450 072 832



INT: 88m²

The floor plan is not to scale; measurements are indicative and in metres. Exterior elements are not in position. Plans should not be relied on. Interested parties should make and rely on their own enquiries. All other information provided has been collected from reliable sources but cannot be guaranteed for accuracy.

6/71 Clyde Street, Guildford

